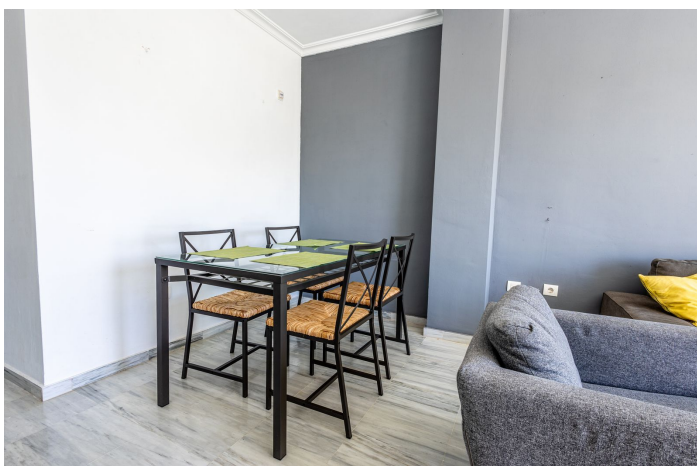


Lejlighed i øverste etage til salg i Alhaurín el Grande, Alhaurín el Grande

255.000 €

Reference: R4827409 Soveværelser: 2 Badeværelser: 2 Byg Størrelse: 105m² Terrasse: 6m²



Valle del Guadalhorce, Alhaurín Golf

LOVELY TOP FLOOR APARTMENT

A must-see, top floor apartment that provides a true front line golf experience. This lovely property offers two bedrooms, two bathrooms, a recently reformed large kitchen and open plan living and dining room.

The apartment itself feels larger than its size, is light, airy and provides a myriad of fantastic mountain, national park, and golf views. Both bedrooms are of a generous size as are the kitchen and lounge. The primary ensuite bathroom is large and spacious. The off-lounge terrace whilst compact is extremely practical and is very usable, with fabulous, front-line golf, mountain and forest views.

This apartment is in arguably the best building the community has to offer. Looking attractive and feeling both personal and secure. The apartment offers privacy and will satisfy those looking for peace and serenity. There is secure underground parking and lift access to the apartment. Compared to many apartment complexes, this building offers a premium and high-end feel.

The opportunity to purchase a property in this building and especially on the top floor seldom comes available and will suit those looking for an investment, long-term rental income, as a lock-up and leave holiday home or for permanent living.

The Pueblo Andaluz urbanization is highly regarded as being one of the, if not the best communities and boasts a resort like swimming pool with waterfall and beautiful gardens.

Alhaurin Golf is well placed for Mijas, La Cala, Fuengirola, Malaga Airport, Marbella and beyond. There are several beaches and golf courses within a 20-minute drive and an extensive number of restaurants in the local vicinity. Alhaurin Golf itself was designed by Severiano Ballesteros and is deemed a true test of a golf.

We recommend a visit to the property to take in the views and privacy afforded by this property.

Funktioner:

Funktioner

Elevator
I nærheden af transport
Privat terrasse
Ensuite badeværelse
Marmorgulve
Dobbeltvindue
Monterede garderobereskabe

Synspunkter

Bjerg
Panoramisk
Land
Have
Golf
Skov

Pool

Kommunal

Have

Kommunal
Anlæg

Hjælpeprogrammer

Elektricitet
Drikkeligt vand

CO2 -emissionsklassificering

D

Orientering

Syd
Sydøst
Sydvest

Indstilling

Urbanisering
Frontline Golf
Land
Mountain Pueblo
Tæt på skov

Møbel

Ikke møbleret

Sikkerhed

Indgangstelefon

Kategori

Holiday Homes
Investering
Golf
Videresalg

Klimakontrol

Aircondition
Centralvarme

Tilstand

God

Køkken

Fuldt monteret

Parkering

Underjordisk
Garage
Kommunal

Energi rating

E