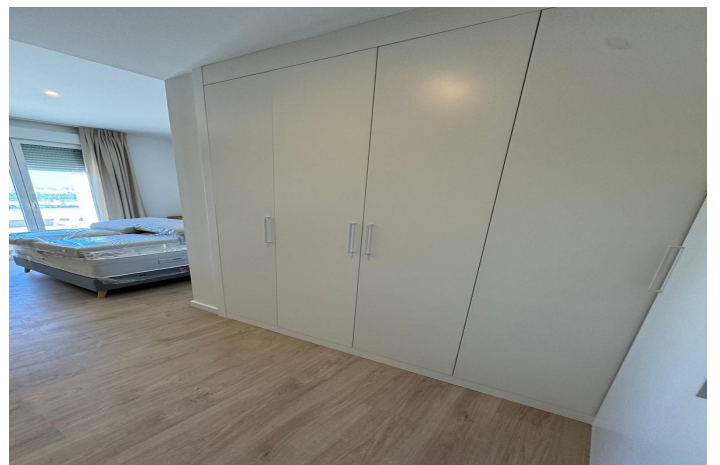
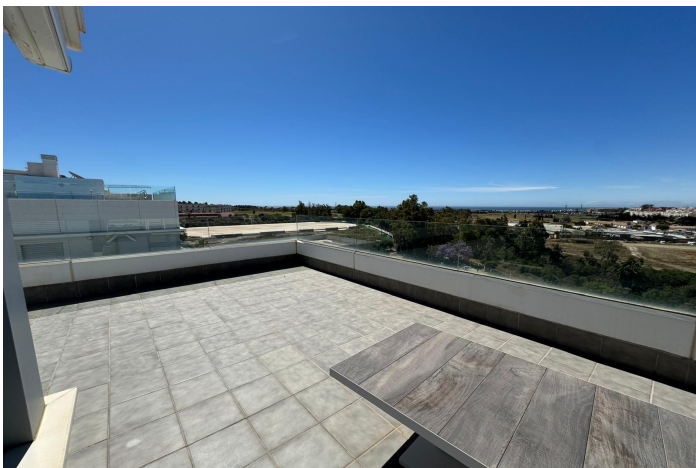


## Penthouse for rent in Nueva Andalucía, Marbella

4,000 - 4,000 €

Reference: R4753708 Bedrooms: 4 Bathrooms: 2 Build Size: 117m<sup>2</sup> Terrace: 100m<sup>2</sup>



## Costa del Sol, Nueva Andalucía

Presenting The Best Positioned Luxurious Penthouse in Jardines de Guadaiza

Discover contemporary living at its finest in this immaculately renovated penthouse, nestled within the sought-after urbanization of Jardines de Guadaiza. Situated in the vibrant new district of Nueva Andalucía, known as La Campana, this property is a true gem in a prime residential location. Here, you'll find yourself enveloped by a tapestry of restaurants, boutiques, golf courses, and other conveniences, all within a leisurely stroll. Additionally, you're just a short drive away from the beloved locales of San Pedro, Puerto Banus Harbour, and Puente Romano.

This modern apartment underwent a top-tier renovation in 2022, showcasing a blend of elegance and functionality. It boasts an airy living space seamlessly integrated with an open-plan kitchen, along with two generously sized bedrooms and bathrooms.

What truly sets this property apart is the magnificent terrace, spanning over 40 square meters. This outdoor oasis not only features an invigorating outdoor shower but also offers direct access from every room, providing breathtaking vistas of the Mediterranean Sea and the iconic La Concha mountain.

Moreover, you'll relish the ease of accessing the community swimming pool, conveniently located on the same level, offering you panoramic vistas that are nothing short of spectacular. The building's communal areas are equally impressive, encompassing a fully equipped gym, tranquil chillout zones, and a communal room complete with a kitchen, perfect for hosting gatherings and events.

Positioned in a privileged location, with proximity to schools, golf courses, and excellent transportation links, this property stands as an ideal year-round residence.

## Features:

### Features

Covered Terrace  
Lift  
Near Transport  
Private Terrace  
Ensuite Bathroom  
Fitted Wardrobes  
WiFi  
Gym  
Basement  
Access for people with reduced mobility

### Views

Sea  
Beach  
Urban

### Pool

Communal

### Security

Gated Complex

### Category

Holiday Homes

### Orientation

South

### Setting

Close To Golf  
Urbanisation  
Close To Sea  
Close To Shops  
Close To Schools

### Furniture

Fully Furnished

### Parking

Underground

### Climate Control

Air Conditioning  
Cold A/C  
Hot A/C

### Condition

Excellent

### Kitchen

Fully Fitted

### Utilities

Electricity