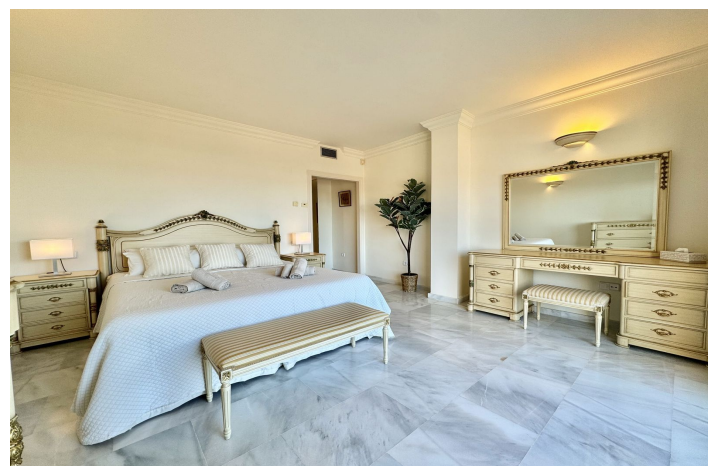


Tussenverdieping Appartement te huur in Nueva Andalucía, Marbella

3.500 - 3.500 €

Referentie: R4808707 Slaapkamers: 4 Badkamers: 2 Perceelgrootte: 230m² Terras: 40m²



Costa del Sol, Nueva Andalucía

BREATHTAKING PANORAMIC VIEWS OF THE SEA, MOUNTAINS AND GOLF!

Located in one of the best residential complexes in Nueva Andalucía, this incredible apartment represents the perfect holiday residence for those looking for a classic and elevated lifestyle in the Golf Valley.

It is one of the largest properties in the complex, facing west and offering beautiful 180° panoramic views to the sea, mountains and golf. This property has four large bedrooms and 2 full bathrooms. A spacious living room, fully furnished kitchen equipped with everything you need for a dream holiday. The living room gives access to a cozy and spacious terrace, which invites you to enjoy the incredible panoramic views and magnificent sunsets.

The property has been built to the highest standards and has hot/cold air conditioning. It also includes a parking space in an underground garage.

The master bedroom with a double bed, a second bedroom with a double bed, the third bedroom with two single beds and a fourth bedroom with a sofa bed for two people. The living room, master bedroom and bedroom 2 all have blinds. Bedrooms 3 and 4 have regular curtains.

The Magna Marbella residential complex offers three outdoor swimming pools and a huge, well-kept tropical garden, a surveillance camera system and a 24-hour security service to ensure safety and tranquility. Right at the foot of the complex are the Magna Marbella golf course and the well-known Magna Café restaurant. Just 5 minutes by car from Puerto Banús and the beach. The best golf courses in Marbella: Las Brisas, Aloha and Los Naranjos Golf, as well as all the services of Nueva Andalucía are in the immediate vicinity.

Kenmerken:

Extra's

Overdekt terras
Tillen
Privéterras
Satelliet -tv
Ensuite badkamer
Marmere vloeren
Dubbele beglazing
Gemonteerde kasten
Jacuzzi
Restaurant ter plaatse
Glasvezel

Uitzicht

Zee
Berg
Panoramisch
Tuin
Pool
Golf

Zwembad

Gemeenschappelijk

Tuin

Gemeenschappelijk

Categorie

Vakantiehuisen

Zonorientatie

West

Ligging

Dicht bij de poort
Verstedelijking
Dicht bij winkels
Dicht bij scholen
Frontline golf

Meubilering

Volledig ingericht

Beveiliging

Gated Complex
24 -uurs beveiliging
Elektrische jaloezieën

Klimaatbeheersing

Airconditioning
Koud A/C
Hete a/c

Huidige Staat

Uitstekend

Keuken

Volledig passend

Parkeergelegenheid

Ondergronds
Garage