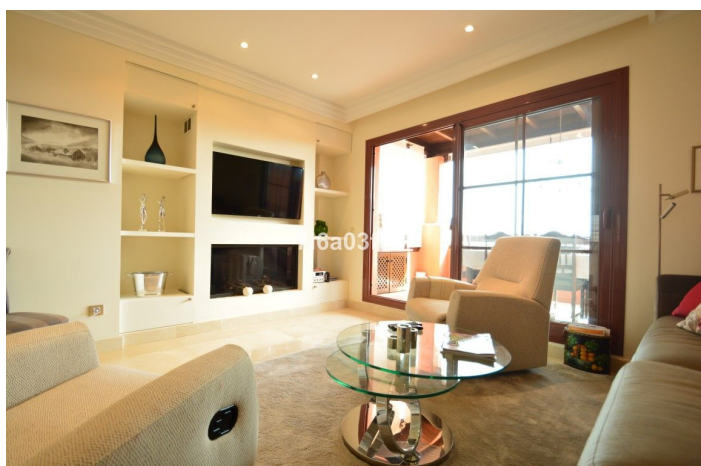
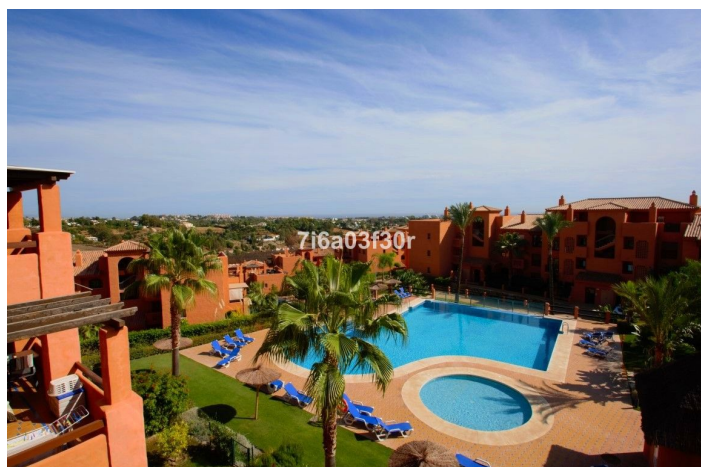
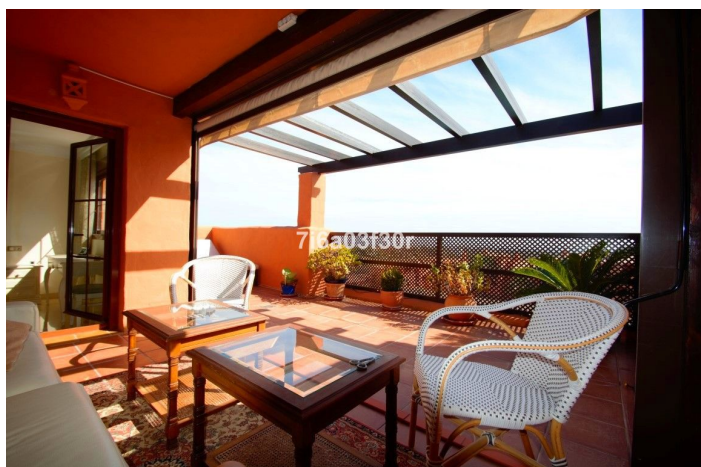




Penthouse til leje i Benahavís, Benahavís

2.400 - 2.400 €

Soveværelser: 3 Badeværelser: 2 Byg Størrelse: 242m² Terrasse: 61m²





Costa del Sol, Benahavís

Amazing 3 bedroom duplex-penthouse decorated with a Scandinavian style, panoramic views to the sea and the mountain. *****Available from October until end of May*****

PROPERTY: Spacious duplex penthouse, decorated in a Scandinavian style, the distribution in the first floor is based in the living room area with gas fireplace and separate dining room, fully equipped modern kitchen with breakfast area, a bedroom-office, another double bedroom and a modern bathroom. The living and dining room have both direct access to the large terrace where you can enjoy views to the sea, mountains, pool area and the gardens. Beautiful luxurious duplex penthouse situated in the upmarket resort of Gazules del Sol. 3 Sunny terraces on different levels. 4 shared outdoor pools, and childrens pool . This property, with marble floors, boasts nice decoration and stylish quality furniture with everything you could want to make your holiday a perfect one. There are 3 excellent terraces on different levels with view to the pool area and panoramic views to the mountains and the Mediterranean. The terraces are furnished for al fresco dining or just relaxing and enjoying the sun with a cool drink. On the upper floor there is a master bedroom with bathroom en-suite and a covered terrace with fitted kitchen and barbecue. The master bedroom has direct access to one of the terraces and the master bathroom has a walk-in-shower. The shared bathroom has bath with shower. Both bathrooms have double sink, bidet and toilet.

COMPLEX: The penthouse, set within tropical gardens, offers a wonderful combination of breathtaking views of the mountains and the Mediterranean Sea, an easy access to golf courses and to the coast. Ideal for a holiday in the sun with family or friends, or a golfing break. For cycling enthusiasts, the property leads on to several magnificent cycling routes. The gated complex, with 24/24 security, has 4 outdoor swimming pools, with separate children's pool and a heated indoor pool in the sports complex, including jacuzzi, saunas, gym and a padel tennis court. From the secure underground parking, there is direct access to the apartment by lift or by steps. The nearest supermarket is right across the road so you don't even need the car to go shopping.

AREA: Benahavis is synonymous with food. It has the highest concentration of high class restaurants in the region and draws visitors by the thousands who come simply to savour the cuisine. It also has an extremely high percentage of residents who have found its situation and ambience irresistible. In spite of this, it has remained remarkably unspoiled, with winding narrow streets ill-suited to the motor car, and a picturesqueness which almost makes it seem like a specially-created film set. It stands 500 metres above sea level, 7 kilometres inland from the Guadalmina Golf Course, and is reached by driving through the rio Guadalmina gorge up into the hills. Its Moorish heritage is emphasised by the existence nearby of the ruined 11th Century castle of Montemayor. As its name implies, this Arab stronghold squats on top of the highest mountain in the locality, and anyone wishing to make the climb to visit the ruins and experience the truly sensational views of the coastline should be prepared for a strenuous but rewarding effort. A notable feature of the village is La Aldea. Almost a village within a village, La Aldea was the brainchild of the British sculptor, David Marshall, whose gallery is one of its main features however there are other art galleries in Benahavis. Though largely a recent creation, determined efforts have been made to make this enclave even more Andalucían than Benahavis itself, with marble fountains, antiques and old-fashioned doors and grilles. There are 7 fabulous golf courses and clubs in Benahavis for all abilities. All too often this is easier said than done, and the best alternative is to drive carefully to the Restaurante Los Faroles on calle Málaga. For those not ready for a heavy lunch there are numerous bars serving excellent tapas and even a small pizzeria .

DISTANCES: (Approximate) Distances: Approximate distances are : Benahavis Village - 3 KM San Pedro - 8 KM Puerto Banus - 17 KM Estepona - 18 KM Marbella - 30 KM Ronda - 60 KM Gibraltar - 65 KM Malaga Airport - 75KM Granada - 200 KM



Funktioner:

Funktioner

Dækket terrasse
Elevator
I nærheden af transport
Privat terrasse
Satellit -tv
Opbevaringsrum
Ensuite badeværelse
Marmorgulve
Dobbeltvindue
24 timers modtagelse
Monterede garderober
Solarium
Wifi
Gymnastiksal
Sauna
Padle tennis
Tennisbane
Jacuzzi
Grill

Domotics

Synspunkter

Hav
Bjerg
Panoramisk

Pool

Kommunal
Indendørs
Børns pool

Have

Kommunal

Hjælpeprogrammer

Elektricitet
Drikkeligt vand
Telefon

Orientering

Syd

Indstilling

Tæt på golf
Urbanisering
Tæt på butikker
Tæt på byen
Tæt på skoler
Tæt på skov
Tæt på marina

Møbel

Ikke møbleret
Valgfri

Sikkerhed

Gated kompleks
24 timers sikkerhed
Elektriske persienner
Indgangstelefon
Sikker

Kategori

Luksus

Klimakontrol

Aircondition
Forud installeret aircondition
Kold aircondition
Varm aircondition

Tilstand

Fremragende

Køkken

Fuldt monteret

Parkering

Underjordisk