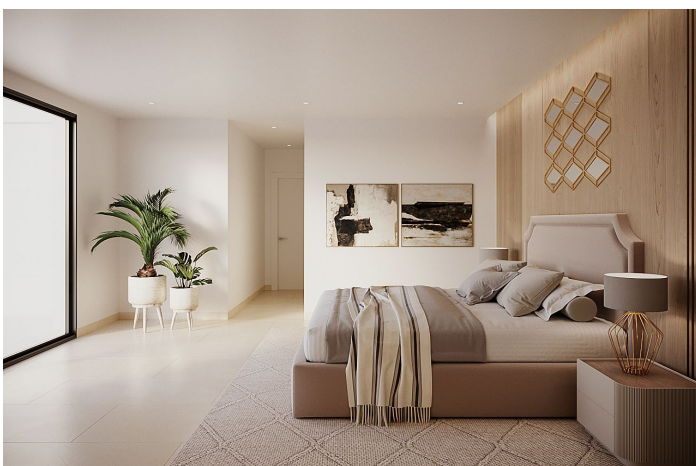


# Detached Villa for sale in Benalmadena Costa, Benalmádena

1,550,000 €

Reference: R3542026 Bedrooms: 5 Bathrooms: 4 Plot Size: 977m<sup>2</sup> Build Size: 693m<sup>2</sup> Terrace: 161m<sup>2</sup>





## Costa del Sol, Benalmadena Costa

**ONLY ONE HOUSE LEFT!!**

Nestled in the heart of the sunny Benalmadena coast, your dream retreat awaits. This cutting-edge new villa offers more than a home; it presents a lifestyle of luxury, convenience, and coastal elegance.

Just a stone's throw from the azure waters, this detached jewel features a thoughtful design spanning four floors – complete with an elevator linking every level for your comfort. Every corner of the 694 square meters of living space exudes a sense of refined luxury with a further unmeasured expanse of ocean views from your terraces making every sunset a spectacle.

Here, your personal oasis awaits, complete with an indoor pool for leisurely swims, a billiard room and home cinema for endless entertainment, and sprawling terraces that cater to an elevated lifestyle. The allure of this villa further unfolds with its six commodious bedrooms, offering respite from the day, and a fully-equipped modern kitchen.

The premier location – within reach of an international school, Pueblo, and Malaga airport – ensures that your slice of paradise is both prime and practical.

Plot Area: 977 m<sup>2</sup>, Bedrooms: 5, Bathrooms: 8, Features: Lift, Indoor and Outdoor Pools, Billiard Room, Home Cinema, Proximity to Beach and Amenities, Storage, Huge Terraces, Stunning Sea Views, Great Value for Money – Enquire today to seize the dream.

PS. The house stands vacant, while the accompanying photos serve as renders, offering a visual representation of its potential transformation.

## Features:

### Features

Covered Terrace  
Lift  
Near Transport  
Private Terrace  
Storage Room  
Ensuite Bathroom  
Fitted Wardrobes  
Games Room  
Jacuzzi  
Basement

### Views

Sea

### Garden

Private  
Landscaped

### Category

Luxury  
New Development

### Orientation

South East

### Setting

Close To Sea  
Close To Shops

### Security

Electric Blinds

### Climate Control

Cold A/C  
Hot A/C  
U/F Heating

### Pool

Indoor  
Private

### Parking

Underground  
Garage  
More Than One