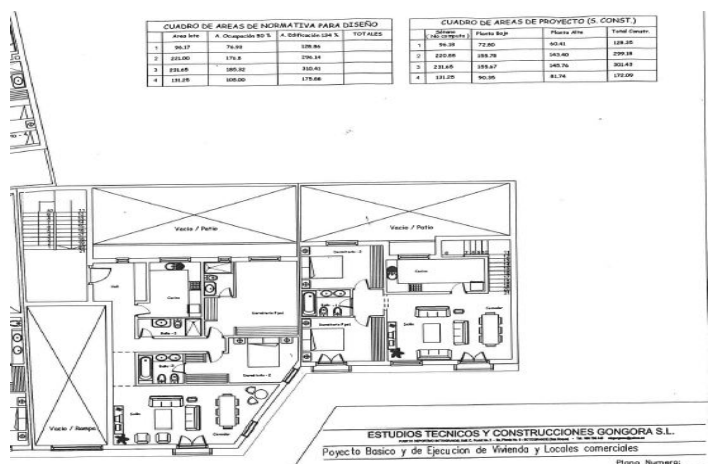
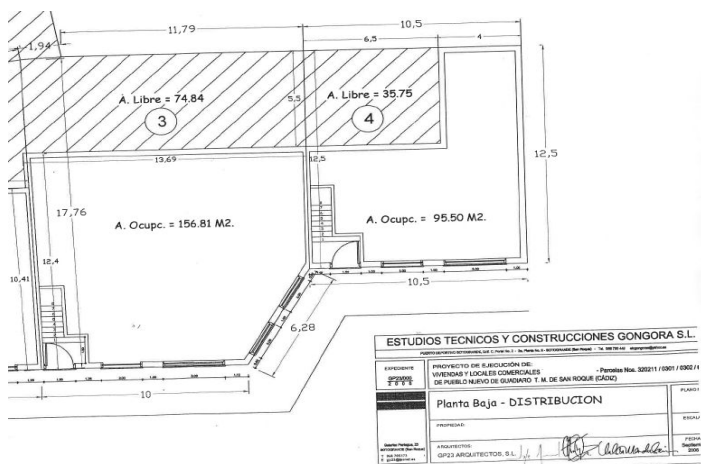


# Commercial Premises for sale in Pueblo Nuevo de Guadiaro, San Roque

660,000 €

Reference: R3140005 Build Size: 836m<sup>2</sup> Terrace: 227m<sup>2</sup>





## Costa de la Luz, Pueblo Nuevo de Guadiaro

Commercial Premises, Pueblo Nuevo de Guadiaro, Costa del Sol.  
Built 836 m<sup>2</sup>, Terrace 227 m<sup>2</sup>.

Setting : Town, Suburban, Commercial Area, Village, Close To Golf, Close To Port, Close To Shops, Close To Sea, Close To Schools.

Orientation : South East.

Condition : New Construction.

Views : Courtyard, Urban, Street.

Features : Private Terrace, Solarium.

Furniture : Not Furnished.

Kitchen : Not Fitted.

Parking : Underground, More Than One.

Utilities : Electricity.

Category : Distressed, Investment, Off Plan.

## Features:

### Features

Private Terrace  
Solarium

### Orientation

South East

### Views

Courtyard  
Urban  
Street

### Setting

Commercial Area  
Close To Golf  
Close To Shops  
Close To Schools  
Town  
Suburban  
Village

### Condition

New Construction

### Furniture

Not Furnished

### Kitchen

Not Fitted

### Parking

Underground  
More Than One

### Utilities

Electricity

### Category

Investment  
Distressed  
Off Plan