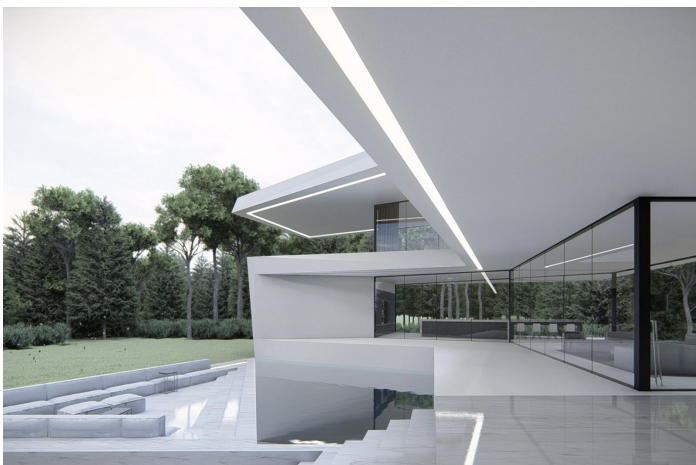


Detached Villa til salg i Benahavís, Benahavís

4.995.000 €

Reference: R4629586 Soveværelser: 7 Badeværelser: 9 Plot Size: 5.000m² Byg Størrelse: 870m² Terrasse: 560m²



Costa del Sol, Benahavís

OFF PLAN – CONTEMPORARY ECOLOGICAL VILLA IN LA QUINTA, BENAHAVIS IN URB. LOS ALMENDROS with panoramic views and views and on 6,5 km from the beach.

The ground floor: entrance hall with lift, guest toilet, technical installations room, spacious living/dining room with large open plan fully fitted kitchen with Bosch appliances and separate pantry, furthermore there is on this floor a separate bedroom/study with en-suite bathroom, large, covered terraces overlooking the large 51,50 m² heated swimming pool.

On the first floor: lift, landing, master bedroom with master bathroom and large dressing room and of course a huge private terrace. A hallway leads you to another 3 bedrooms with 3 bathrooms wherefrom 1 ensuite and a terrace accessible for all 3 bedrooms.

In the semi-basement, you have a huge carport with stairs with a path that leads you to the main entrance.

Furthermore, the lift takes you to this floor where you find another bedroom with a bathroom ensuite, a separate apartment/bedroom and a games room.

There is a completely separate flat which has a living/fitted kitchen/bedroom area, a dressing room and an ensuite bathroom. The separate flat is accessible from the garage but could also be accessed from the lift area.

Construction time approx. 12 to 14 months after licenses.

Pictures of bathrooms and kitchens are just examples of what they could look like, final choice will be that of the clients.

Example of some of the specifications,

- Interior and exterior floor tiles from GRESPANIA 600x600 - 800x800 - 1200x1200 (Color and size to choose)
- Bathroom walls with COVERLAM plates (GRESPANIA) 2700X1200 (Color to choose)
- Bathrooms from ROCA – VILLEROY BOCH – DURAVIT or similar
- Aerothermia/airconditioning
- Elevator from Schindler or similar
- Underfloor heating in the full villa
- Ceiling high windows with a sunken track, 5+5/chamber/6+6
- Ceiling high and 1-meter wide HPL interior doors, 30dB
- Ceiling high pivot entrance door and 1,50 wide
- Fully fitted kitchen with aluminum frame doors and covered with COVERLAM (Color to choose)
- Island with COVERLAM 3600X1600 no visible joints (Colour to choose)
- White goods from Bosch – AEG or MIELE
- Heated pool with automatic cover
- 20 solar panels
- 3 lithium batteries of each 10kW
- Car charger
- Domotica

We are a construction company, Key-in-Hand, that can design and construct any possibility you can think of. If you do not see a design of us that you like we design a totally new villa for you according to your ideas and input.

Although we prefer to construct ecological building, we can construct from traditional construction to ecological constructions it all depends on you.

Funktioner:

Funktioner

Dækket terrasse
Elevator
Privat terrasse
Opbevaringsrum
Ensuite badeværelse
Dobbeltvindue
Monterede garderober
Wifi
Tennisbane
Gæstlejlighed
Guest House
Værktøjsrum
Jacuzzi
Grill
Domotics
Kælder
Fiberoptik
Adgang for mennesker med reduceret mobilitet

Synspunkter

Bjerg
Panoramisk
Land
Have
Pool
Urban
Gade

Pool

Opvarmet
Privat

Have

Privat
Nem vedligeholdelse

Hjælpeprogrammer

Elektricitet
Drikkeligt vand
Telefon
Fotovoltaiske solcellepaneler
Solvandsopvarmning

Orientering

Øst
Vest
Sydøst
Sydvest

Indstilling

Tæt på golf
Urbanisering
Tæt på butikker
Tæt på byen
Tæt på skoler

Møbel

Valgfri

Sikkerhed

Alarmsystem
Indgangstelefon
Sikker

Kategori

Holiday Homes
Investering
Golf
Luksus
OFF PLAN
Moderne

Klimakontrol

Aircondition
Kold aircondition
Varm aircondition
Ildsted
U/f opvarmning
U/f/h badeværelser

Tilstand

Ny konstruktion

Køkken

Fuldt monteret

Parkering

Underjordisk
Garage
Privat
Dækket
Åben
Mere end en