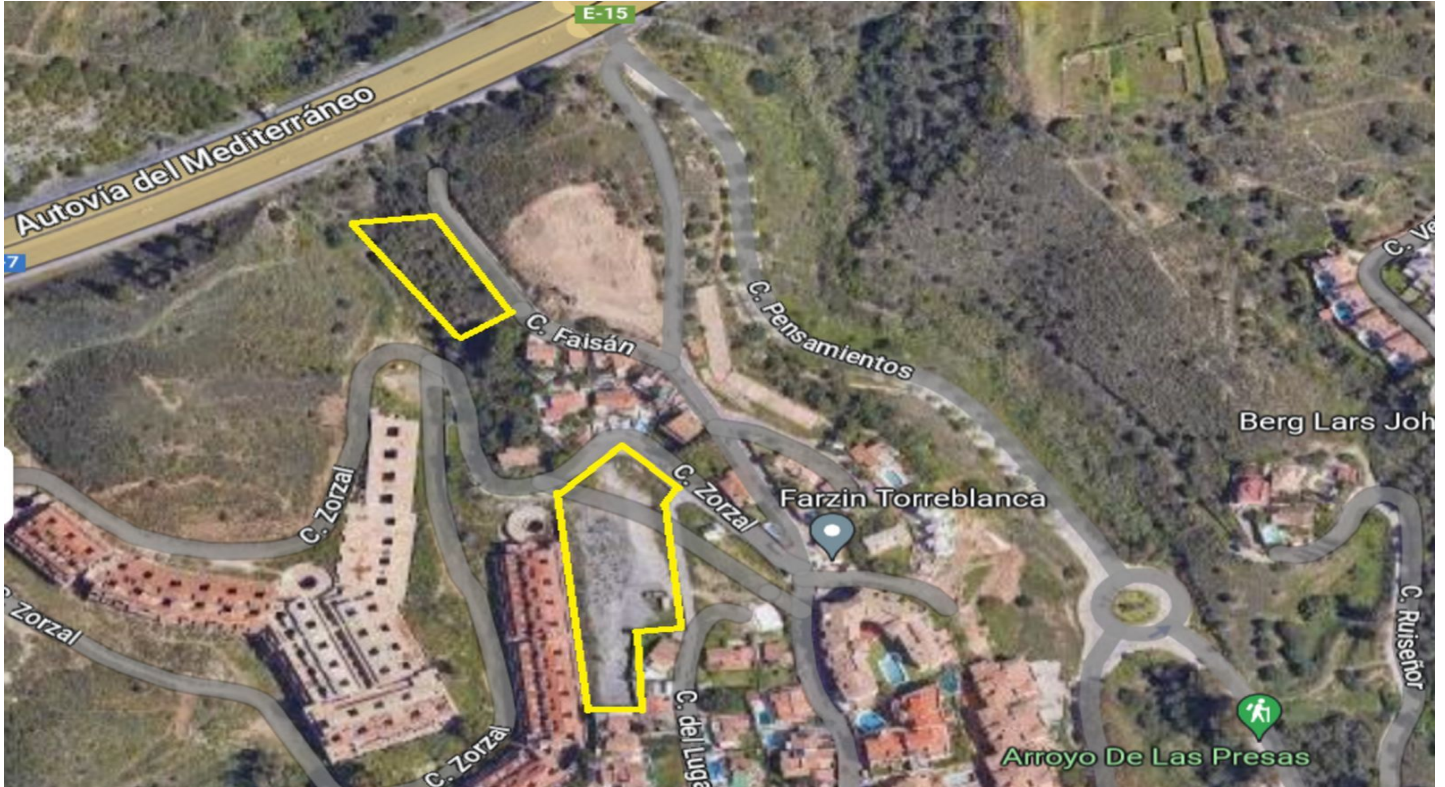


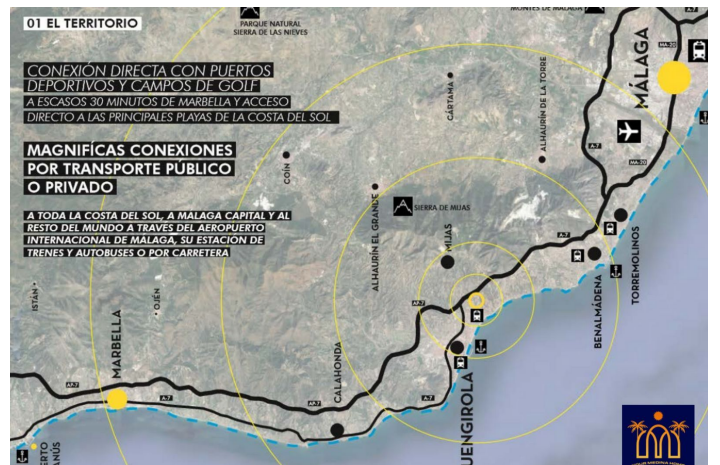
# Residential Plot for sale in Torreblanca, Fuengirola

1,200,000 €

Reference: R4358851 Plot Size: 5,100m<sup>2</sup>



<b>VIVIENDA 01</b> Parcela: 344,57 m <sup>2</sup> Total construida: 343,59 m <sup>2</sup>	<b>VIVIENDA 02</b> Parcela: 252,80 m <sup>2</sup> Total construida: 343,59 m <sup>2</sup>	<b>VIVIENDA 03</b> Parcela: 252,79 m <sup>2</sup> Total construida: 343,59 m <sup>2</sup>	<b>VIVIENDA 04</b> Parcela: 271,05 m <sup>2</sup> Total construida: 343,59 m <sup>2</sup>
<b>VIVIENDA 05</b> Parcela: 333,97 m <sup>2</sup> Total construida: 343,59 m <sup>2</sup>	<b>VIVIENDA 06</b> Parcela: 255,17 m <sup>2</sup> Total construida: 343,59 m <sup>2</sup>	<b>VIVIENDA 07</b> Parcela: 252,79 m <sup>2</sup> Total construida: 343,59 m <sup>2</sup>	<b>VIVIENDA 08</b> Parcela: 330,07 m <sup>2</sup> Total construida: 343,59 m <sup>2</sup>
<b>VIVIENDA 09</b> Parcela: 252,39 m <sup>2</sup> Total construida: 343,59 m <sup>2</sup>	<b>VIVIENDA 10</b> Parcela: 252,39 m <sup>2</sup> Total construida: 343,59 m <sup>2</sup>	<b>VIVIENDA 11</b> Parcela: 252,39 m <sup>2</sup> Total construida: 343,59 m <sup>2</sup>	<b>VIVIENDA 12</b> Parcela: 252,39 m <sup>2</sup> Total construida: 343,59 m <sup>2</sup>



## Costa del Sol, Torreblanca

Great investment opportunity - Two urban plots for sale.

1st Urban plot of 1600m for the construction of 5-6 chalets with panoramic views of the sea and the mountains with a favorable pre-project presented to the town hall.

2nd Urban plot of 3500m for the construction of an urbanization of up to 12 villas with direct views of the sea and enough space to build common areas, swimming pools, gardens, etc.

This project allows an occupation of 20% and 40% of the building with the possibility of increasing the building by delivering a part of the plots to the council.

The plots are located in one of the best locations in Torreblanca, and in which access to it directly from the A-7 is scheduled to open in a few months.

The purchase of the lots can be done both separately and jointly. Project with great profitability since there are no longer lots of these surfaces.

## Features:

### Features

Private Terrace

Basement

### Views

Sea

Mountain

Panoramic

Garden

Pool

Courtyard

Street

### Pool

Room for Pool

Private

### Garden

Private

### Orientation

South

West

### Setting

Urbanisation

Close To Sea

Close To Schools

### Climate Control

Air Conditioning

Pre Installed A/C

### Condition

New Construction

### Furniture

Not Furnished

### Kitchen

Partially Fitted

### Parking

Garage

Private

### Utilities

Electricity

Drinkable Water

Photovoltaic solar panels

Solar water heating

### Category

Investment

With Planning Permission