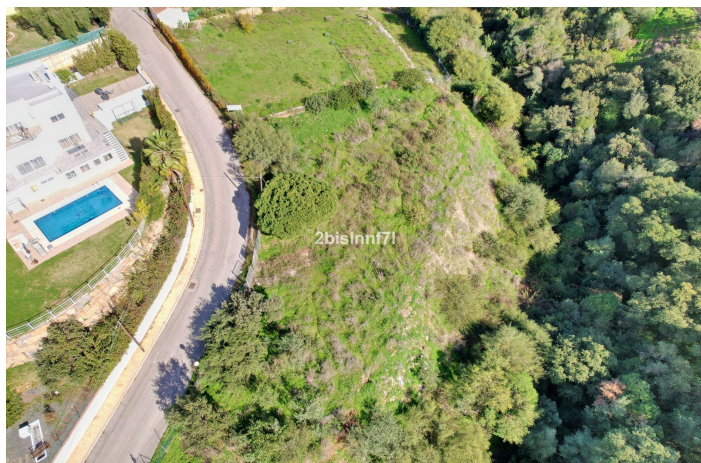
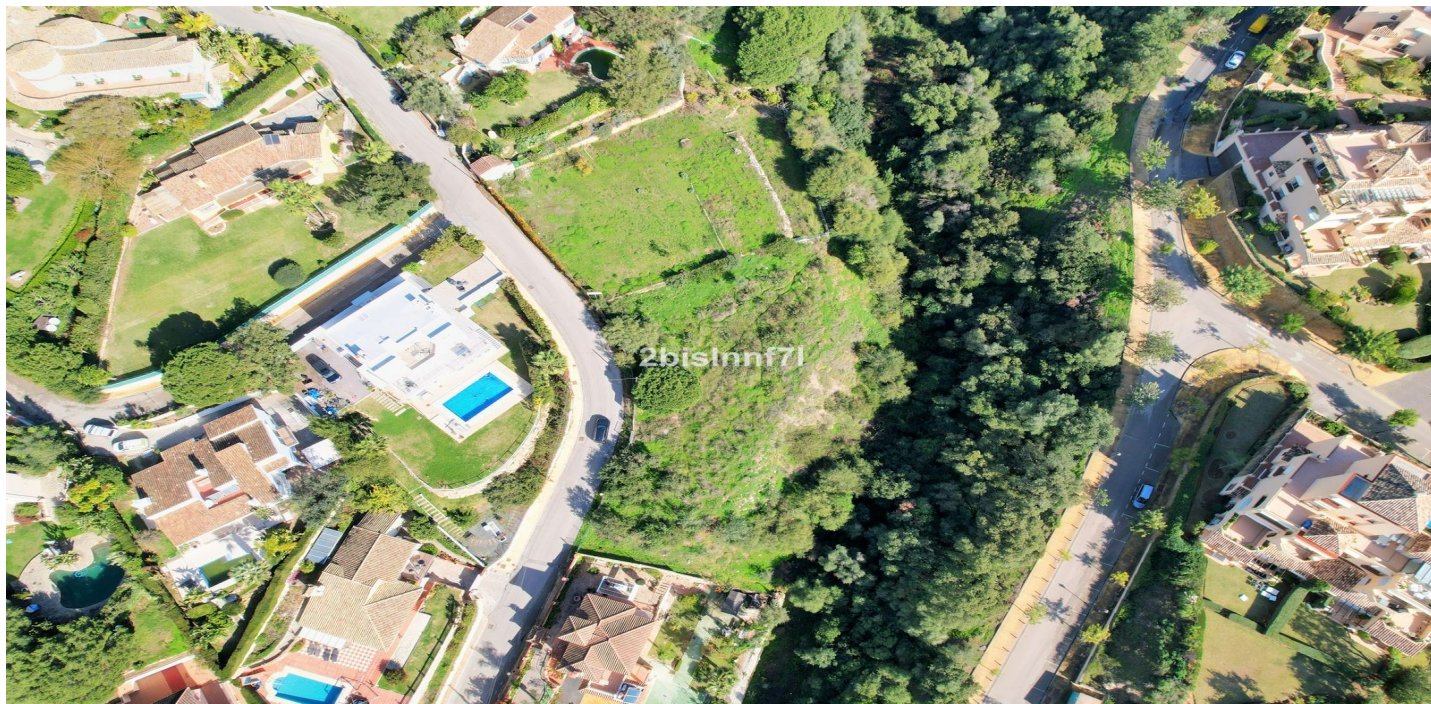




## Residential Plot for sale in Elviria, Marbella

680,000 €

Reference: R4178989 Plot Size: 1,620m<sup>2</sup>







---

## Costa del Sol, Elviria

Large (1.620m<sup>2</sup>) Building PLOT in central Elviria walking distance to commercial center beach and restaurants with sunny position and some sea views Design your stylish modern dream villa According to the classification of the plot, UE-4 (0.20), the urban parameters to be met, \* Occupation: 25% of the plot area. the maximum occupation would be 405.00 m<sup>2</sup>. \* Buildable: 0.20 m<sup>2</sup> / m<sup>2</sup>. maximum buildable would be 306.00 m<sup>2</sup>. \* Retranqueos to public and private boundaries: 3 m \* Maximum height: PB + 1 (7.0 m), according to PGOU 86 \*At the moment this plot is affected by a reduction in the buildability due to being close to the "green zone".



## Features:

### Orientation

South  
South West

### Setting

Close To Sea  
Close To Shops  
Close To Schools

### Category

Investment