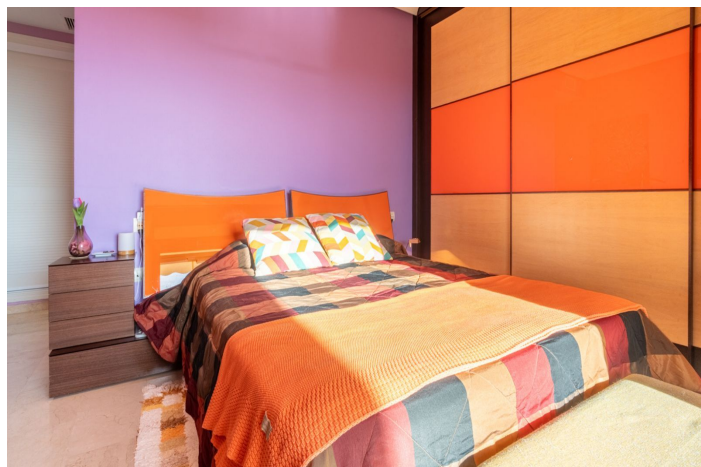




Middle Floor Apartment for sale in Benalmádena, Benalmádena

420,000 €

Reference: R5286973 Bedrooms: 2 Bathrooms: 2 Build Size: 156m²





Costa del Sol, Benalmádena

Apartment located in a well-established residential development next to Torrequebrada Golf, offering a comfortable and well-planned layout. The property features bright, generously sized living spaces, with the main living area opening directly onto an enclosed terrace fitted with glass curtains. From here, there are open views over the surrounding green areas and partial sea views in the distance. The interior is practical and well maintained, suitable for both permanent living and holiday use. The apartment comprises two bedrooms, two full bathrooms, built-in wardrobes and a fully equipped independent kitchen. The enclosed terrace adds valuable year-round living space, allowing natural light to flow through the home while providing a flexible area for dining or relaxation. The property includes a private parking space and forms part of a well-kept residential complex in a quiet setting. Situated in the Torrequebrada Golf area, one of Benalmádena's most established residential zones, the property is within easy reach of the beach, supermarkets, schools, sports facilities and the golf course itself. There is quick access to the A-7 motorway, providing convenient connections to Málaga city centre, Málaga International Airport and the rest of the Costa del Sol. A practical location combining residential surroundings with nearby services and good transport links. The Abbreviated Informative Document (DIA) is available upon request. Additional costs: taxes (ITP or VAT + AJD), notary and registry fees are not included in the price.



Features:

Features

Lift
Near Transport
Private Terrace
Marble Flooring
Fitted Wardrobes
Access for people with reduced mobility

Views

Sea
Mountain
Panoramic
Golf

Kitchen

Fully Fitted

Category

Golf

Orientation

South West

Setting

Close To Golf
Urbanisation
Close To Town

Parking

Garage
Private
Covered

Energy Rating

D

Climate Control

Air Conditioning
Central Heating

Condition

Excellent

Utilities

Electricity

CO2 Emission Rating

D