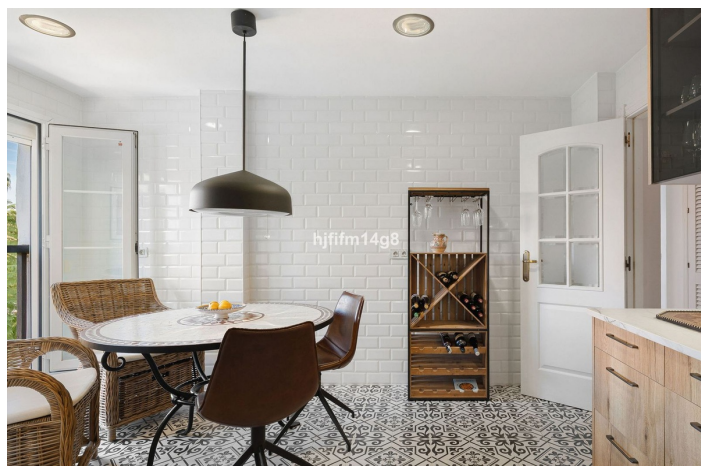
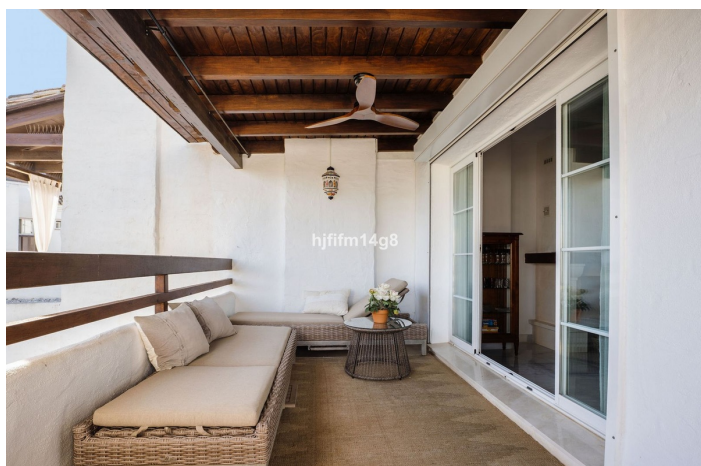




Apartamento Planta Media en venta en San Pedro de Alcántara, Marbella West

825.000 €

Referencia: R5222434 Dormitorios: 2 Baños: 2 Construido: 125m²





Costa del Sol, San Pedro de Alcántara

Location, location, location! Look no further — the sought-after Las Adelfas complex is one of the most desirable communities in the area, and we're delighted to present this charming 2-bedroom apartment perfectly positioned within the urbanisation. Partly renovated, this home beautifully combines modern comfort with authentic Andalusian style, staying true to the charm that makes Las Adelfas so special. Step into a welcoming entrance hall that leads to the spacious living room, featuring a cassette fireplace — perfect for cozy winter evenings. From here, large sliding doors open onto a private, L-shaped covered terrace. Thanks to its corner position, the terrace enjoys excellent privacy and offers two distinct areas — one for relaxing and another perfect for alfresco dining. The kitchen is generously sized and includes a dining area plus a separate utility/storage room with a washing machine and dryer — a great space for those who love cooking and entertaining. Further inside, you'll find two bedrooms. The guest bedroom sits opposite a full bathroom, which also serves conveniently as a guest WC. The master bedroom is especially spacious, currently featuring a sofa bed and a large en-suite bathroom with both a walk-in shower and bathtub, plus a window for natural light and ventilation. From the master suite, you also have direct access to the terrace, creating a lovely indoor-outdoor connection. Additional highlights include: - New air-conditioning system, installed two years ago - Underground parking for one car - Private storage room, ideal for golf clubs, bicycles, or beach gear This delightful property offers comfort, character, and an unbeatable location — a rare opportunity to own a home in one of the most popular complexes in the area.



Características:

Características

Terraza

Elevar

Transporte cercano

Terraza

Trastero

Piso de mármol

Armarios ajustados

Sala de servicios

Posición

Junto a la playa

Cerca del golf

Cerca del puerto

Cerca del mar

Cerca de las tiendas

Cerca de las escuelas

Jardin

Comunal

Climatización

Aire acondicionado

Hogar

Vistas

Montaña

Jardín

Piscina

Piscina

Comunal

Cocina

Parcialmente equipado

Seguridad

Complejo cerrado

Sistema de alarma

Aparcamiento

Comunal