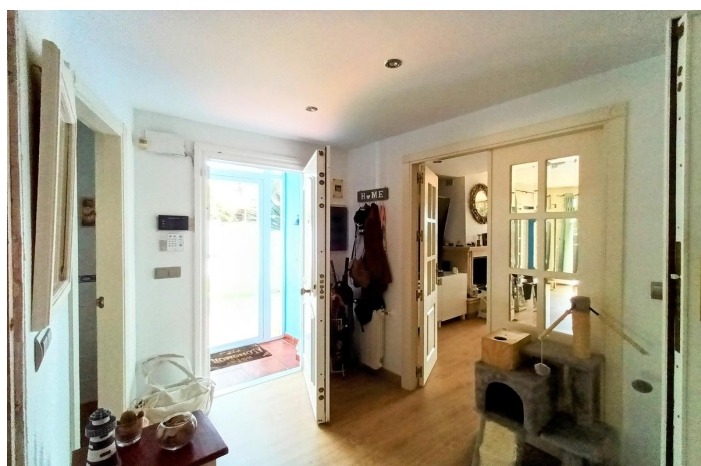




Semi-Detached House for sale in Guadalmar, Málaga

949,000 €

Reference: R5216440 Bedrooms: 4 Bathrooms: 5 Plot Size: 575m² Build Size: 475m² Terrace: 30m²





Costa del Sol, Guadalmar

Discover this beautiful semi-detached house located in the peaceful area of Guadalmar (Málaga), less than a 5-minute walk from the beach. This spacious and well-maintained home combines comfort, elegance, and functionality — ideal as a family residence or holiday retreat. The main floor features a fully equipped kitchen with marble walls, a laundry room, and direct access to the rear terrace and garden. There is also a large entrance hall, a guest toilet, and a bright living room with a fireplace and access to the front terrace, perfect for enjoying outdoor meals or relaxing in the sun. The first floor includes three bedrooms and two bathrooms. One of the bedrooms has a balcony overlooking the communal pool and garden, while the main bedroom offers a balcony with sea and countryside views — the green zone in front is protected and cannot be built on. The master suite also includes an en-suite bathroom with a jacuzzi and two walk-in closets. On the second floor, you'll find a large attic-style bedroom with an en-suite bathroom, walk-in closet, sea views, and built-in cupboards providing extra storage space. The basement is a fantastic entertainment area, featuring a bathroom, pool table, bar, soundproof door, and ample storage space. The property has central heating with radiators in every room, a private entrance with parking for up to three cars, and an inviting outdoor area with a barbecue and private garden. Residents also enjoy access to the communal garden and swimming pool, shared with only eight neighbours, ensuring privacy and tranquility. Conveniently located, the property is less than a 10-minute drive to major shopping centres, and the bus stop is just a 2-minute walk away. A perfect blend of seaside living, comfort, and exclusivity — this home truly has it all.



Features:

Features

Covered Terrace
Near Transport
Private Terrace
Storage Room
Ensuite Bathroom
Double Glazing
Fitted Wardrobes
Games Room
Utility Room
Jacuzzi
Bar
Barbeque
Basement

Views

Sea
Country
Garden
Pool
Street

Pool

Communal

Parking

Private
Open
More Than One

Orientation

South

Setting

Beachside
Urbanisation
Close To Sea
Close To Shops
Close To Town
Close To Schools

Kitchen

Fully Fitted

Utilities

Solar water heating

Climate Control

Air Conditioning

Condition

Excellent
Recently Renovated

Garden

Communal
Private