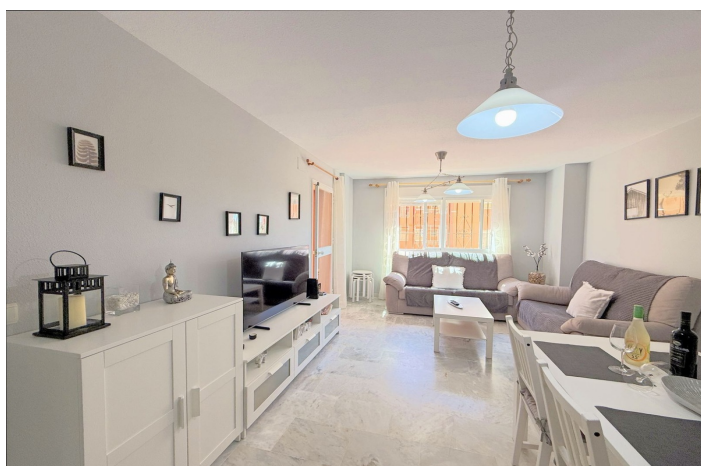




Ground Floor Apartment for sale in La Duquesa, Manilva

268,000 €

Reference: R5205934 Bedrooms: 2 Bathrooms: 2 Build Size: 84m² Terrace: 60m²





Costa del Sol, La Duquesa

Beautiful Apartment with Spacious Terrace and Private Patio in La Duquesa With a privileged location just 400 meters from the beach and surrounded by everything you need for day-to-day living. Supermarkets, restaurants, a gym, and services are just steps away, while in only 3 minutes by car you can enjoy the charming marina of La Duquesa and in 5 minutes the prestigious Sotogrande port, both perfect for strolling by the sea and experiencing the unique atmosphere of the Costa del Sol. A location that combines peace and quiet with the convenience of having everything close at hand. This bright and welcoming ground-floor property offers a large terrace alongside a generous private patio with a barbecue area—perfect for enjoying pleasant evenings outdoors all year round, thanks to the area's exceptional microclimate. Facing south, it receives abundant natural light, creating a warm and comfortable atmosphere. It features two bedrooms and two bathrooms, stylishly presented and in excellent condition, ready to move into or enjoy as a holiday home. The charming residential complex, full of potential, is a small oasis of relaxation with a spectacular communal pool, beautifully maintained gardens, and a children's play area. In addition, the property has a valid tourist license and an excellent rating on vacation rental platforms, making it an attractive option both for those seeking a second home and for those wishing to continue with a profitable investment. Don't miss the opportunity to visit and discover for yourself all the advantages that make this a unique choice on the Costa del Sol.



Features:

Features

Covered Terrace
Lift
Near Transport
Private Terrace
Ensuite Bathroom
Marble Flooring
Fitted Wardrobes
Barbeque
Fiber Optic

Views

Country
Garden
Urban
Street

Pool

Communal

Garden

Communal
Landscaped

Utilities

Electricity
Drinkable Water
Telephone

Orientation

East
South

Setting

Commercial Area
Close To Golf
Close To Port
Urbanisation
Close To Sea
Close To Shops
Close To Town
Close To Schools
Close To Forest
Close To Marina

Furniture

Optional

Security

Gated Complex
Entry Phone

Category

Holiday Homes
Investment
Resale

Climate Control

Air Conditioning
Cold A/C
Hot A/C

Condition

Good

Kitchen

Fully Fitted

Parking

Underground
Private