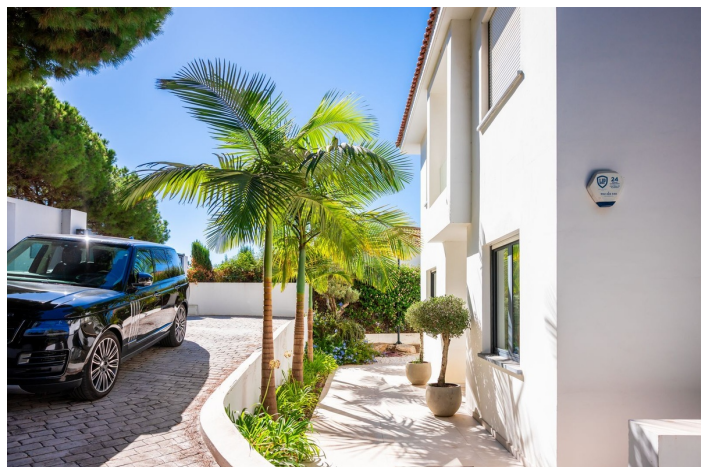




Detached Villa for sale in Artola, Marbella East

3,500,000 €

Reference: R5199706 Bedrooms: 6 Bathrooms: 6 Plot Size: 1,000m² Build Size: 665m² Terrace: 335m²





Costa del Sol, Artola

Stunning Contemporary Villa with Sea & Mountain Views This exceptional 5-bedroom villa effortlessly combines cutting-edge design with luxurious comfort, offering panoramic views of both the sea and surrounding mountains. Set in a peaceful and prestigious location, this contemporary home is finished to the highest standards throughout, making it ideal as a family residence, holiday escape, or premium rental investment. The property boasts spacious, light-filled interiors, including five generously sized bedrooms and a dedicated office – perfect for remote work or study. Every detail of the fit-out has been carefully considered, with top-quality materials and sleek, modern finishes throughout. Designed for both comfort and security, the villa includes a high-tech alarm system, electric shutters, and a large underground garage with ample space for multiple vehicles. Outdoors, the heated swimming pool is surrounded by elegant terraces and landscaped gardens – the perfect setting for relaxation or entertaining. This villa truly offers a luxurious lifestyle in a breathtaking setting – a rare opportunity not to be missed.



Features:

Features

Covered Terrace
Near Transport
Private Terrace
Satellite TV
Storage Room
Ensuite Bathroom
Double Glazing
Fitted Wardrobes
WiFi
Utility Room
Barbeque
Domotics
Basement
Fiber Optic

Views

Sea
Mountain

Pool

Heated
Private

Garden

Private
Easy Maintenance

Utilities

Electricity

Orientation

South
South West

Setting

Close To Golf
Close To Shops
Close To Schools
Close To Marina

Furniture

Fully Furnished

Security

Alarm System
Electric Blinds
Entry Phone
Safe

Category

Holiday Homes
Investment
Luxury
Resale
Contemporary

Climate Control

Air Conditioning
Cold A/C
Hot A/C
U/F Heating

Condition

Excellent

Kitchen

Fully Fitted

Parking

Garage
Private
More Than One