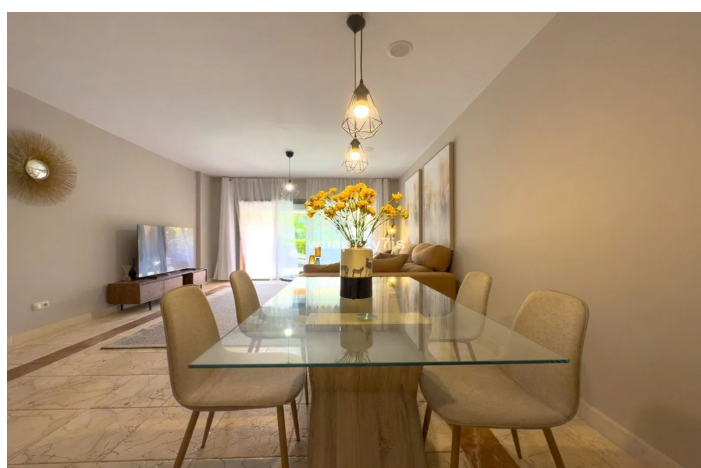




Apartamento Planta Baja en venta en Estepona, Estepona

730.000 €

Referencia: R5173753 Dormitorios: 3 Baños: 3 Terreno: 50m² Construido: 112m² Terraza: 10m²





Costa del Sol, Estepona

Dream Groundfloor Apartment in Benatalaya Discover true peace and elegance with this stunning ground-floor apartment in the prestigious Benatalaya complex. Bright, spacious, and beautifully furnished (furniture inclusive!), it offers an inviting open-plan living and dining area with direct access to your private terrace and garden, a perfect spot to relax, entertain, or simply enjoy the tranquility. This home features three en-suite bedrooms, a fully equipped modern kitchen with laundry area, plus the convenience of two parking spaces and a large storage room. And yes, it comes furnished, ready for you to move in. Life at Benatalaya is all about wellness and comfort. Residents enjoy 5 swimming pools (including 1 indoor heated pool), a fully equipped gym, spa, sauna, and lush tropical gardens. It's so peaceful here, you'll hear nothing but nature. For golf lovers, this property offers something truly unique: direct access to Atalaya Golf, and with your purchase, you'll even become a shareholder of the Atalaya Golf & Country Club. Practicality meets investment security: the community has already approved the Tourist Licence, giving you the flexibility of high rental potential alongside the perfect holiday or permanent home. Located just minutes from Puerto Banús, Marbella, and Estepona, and surrounded by international schools and world-class golf courses, this property is a rare opportunity to combine lifestyle, luxury, and smart investment. Basic features: 183 m² built 112 m² usable space 3 bedrooms, all en-suite Furniture included 2 parking spots + large storage room



Características:

Características

Terraza

Elevar

Terraza

Baño privado

Armarios ajustados

Gimnasia

Sauna

Estado

Excelente

Reformado Recientemente

Cocina

Cocina Equipada

Aparcamiento

Parking Subterráneo

Cochera

Parking Privado

Parking Cubierto

More Than One

Orientación

Suroeste

Piscina

Comunal

Interior

Jardin

Comunal

Jardín Privado

Categoría

Inversión

Golf

Lujo

Climatización

Aire acondicionado

Fría de aire acondicionado

A/C caliente

Calefacción central

Muebles

Completamente Amueblada

Seguridad

Complejo cerrado

Seguridad de 24 horas