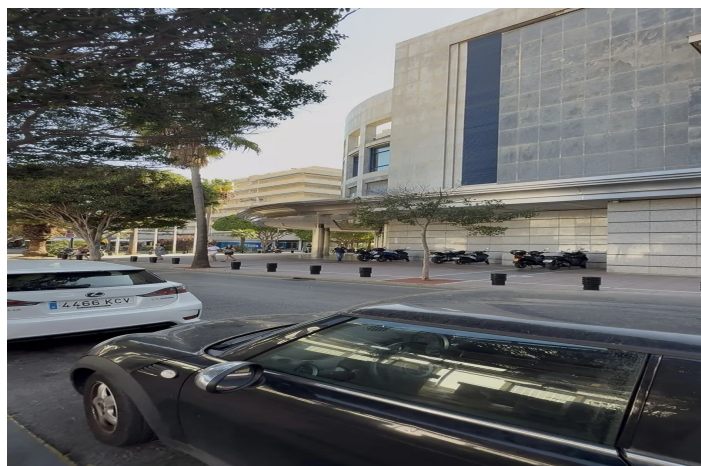
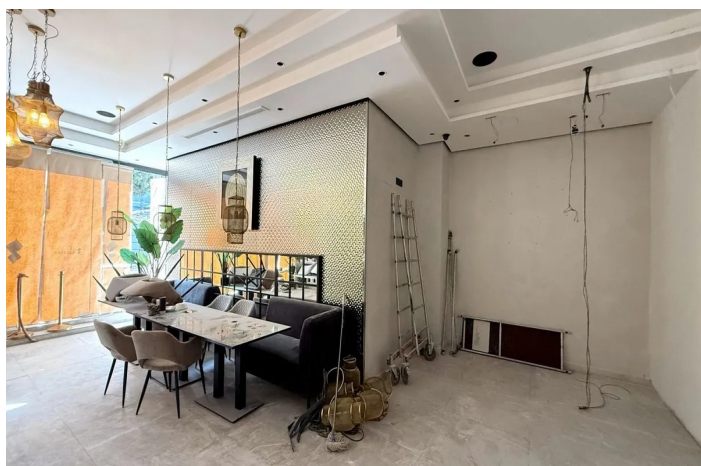




Commercial Premises for rent in Puerto Banús, Marbella West

7,000 - 7,000 €

Reference: R5191627 Bedrooms: 2 Bathrooms: 2 Build Size: 120m²





Costa del Sol, Puerto Banús

Prime Commercial Space for Rent in Puerto Banús – With Open Terrace! 📍 Looking for a standout location for your business? This exceptional 120 sqm commercial unit is now available for rent in the prestigious Red Line zone of Puerto Banús, just a few steps from El Corte Inglés – one of the busiest and most exclusive areas on the Costa del Sol. Key Features: 120 sqm Interior Space – Ideal for Restaurant, Café, Bar, or Retail Open Terrace for Visitors – Perfect for Outdoor Dining or Lounge Setup Red Line Commercial Zone – Maximum Visibility & Constant Foot Traffic Easy Access & Nearby Parking Facilities This location attracts high-end clientele and international visitors daily – the perfect setting to elevate your brand and ensure strong returns. Puerto Banús – Near El Corte Inglés 120 sqm + Open Terrace Contact us now to arrange a viewing – Premium spaces like this are rarely available!