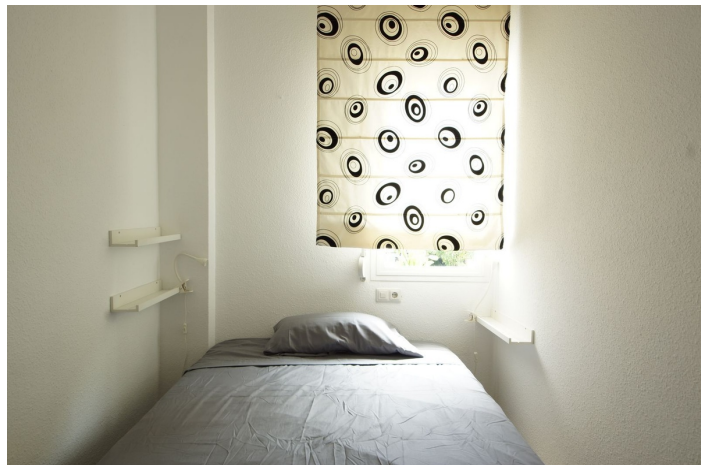




Middle Floor Apartment for rent in San Pedro de Alcántara, Marbella West

1,595 - 1,595 €

Reference: R5166421 Bedrooms: 2 Bathrooms: 1 Build Size: 78m²





Costa del Sol, San Pedro de Alcántara

Exclusive Bright Apartment in the Heart of San Pedro Alcántara (Marbella) Beautiful and elegant apartment located on the main street of San Pedro Alcántara, within a modern building with lift and access ramp, surrounded by all amenities – shops, banks, restaurants, cafés and leisure areas. The property, fully renovated and freshly painted, is furnished and equipped with hot and cold air conditioning in both the living room and bedrooms. Each bedroom features a double bed, plus there is an extra folding bed for added flexibility. It offers a spacious entrance hall, perfect as a reception area, a bright living room with access to a balcony overlooking the main street, and a practical layout suitable for both residential living and professional use (office or consulting space). Exceptional location: Only 1 minute's walk from San Pedro's famous Boulevard, a vibrant promenade with green areas and a beautiful footbridge. About 1.5 km from the beach (5 minutes by car or a pleasant walk). Just 5 minutes from Puerto Banús and 15 minutes from Marbella town centre. A public parking area is located right in front of the building, and within 50 metres you'll find a taxi rank and bus stops with connections to Málaga, Ronda, Sevilla, Granada and the airport. The building is modern and very quiet, with excellent sound insulation, ensuring peaceful nights despite its central position. The apartment includes Internet TV with nearly 200 international channels, featuring British, Nordic, French, Arabic, Russian, and Latin American programming, among others. An excellent opportunity for those who wish to live or work in the very heart of San Pedro Alcántara, enjoying comfort, convenience, and a lively atmosphere – all within walking distance and without the need for a car. (Photos and floor plans are for guidance only and may vary slightly.)



Features:

Features

Lift
Near Transport
Private Terrace
Satellite TV
Marble Flooring
Double Glazing
Fitted Wardrobes
WiFi
Courtesy Bus
Near Church
Fiber Optic

Views

Urban
Street

Furniture

Fully Furnished

Utilities

Electricity
Drinkable Water

CO2 Emission Rating

D

Orientation

North
South

Setting

Commercial Area
Close To Golf
Close To Port
Close To Sea
Close To Shops
Close To Schools
Town
Village

Kitchen

Fully Fitted

Category

Golf

Climate Control

Air Conditioning
Cold A/C
Hot A/C

Condition

Good

Security

Alarm System
Entry Phone

Energy Rating

D