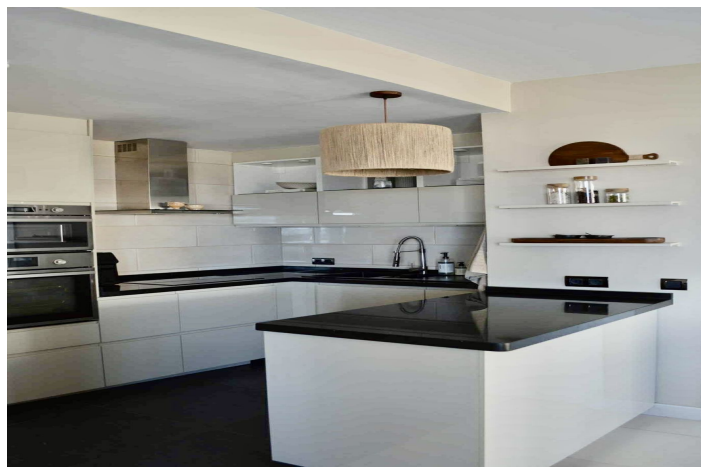




Ático en venta en Higuerón, Benalmádena

620.000 €

Referencia: R5157445 Dormitorios: 2 Baños: 2 Construido: 106m² Terraza: 137m²





Costa del Sol, Higuierón

Penthouse Living at Its Best Step into a world of style and comfort with this stunning penthouse apartment. Featuring two elegant bathrooms – one with a sleek shower and the other with a luxurious bathtub – and two spacious bedrooms, it's designed for both relaxation and everyday living. The bright, open-plan living room seamlessly connects to the kitchen and dining area, creating a perfect space for entertaining or unwinding. A Terrace Like No Other The real showstopper is the 136 m² wraparound terrace, offering sun and shade from morning to evening, all year round. Enjoy breathtaking panoramic views and a true sense of privacy. It's like having your own townhouse perched on top of the building – with all the perks of penthouse living. Convenience Included A private underground parking space and a large storage room make life effortless, giving you all the space you need for extra belongings, sports equipment, or holiday gear. Resort-Style Amenities Indulge in the beautifully landscaped communal gardens with lush palm trees and green spaces. Cool off or soak up the sun in not one but two pool areas, offering plenty of room for relaxation. Just a five-minute stroll from the exclusive Higuierón Resort, you'll have access to a wealth of sports facilities, wellness treatments, and fine dining. The beach, shopping, and motorway are all within quick reach, while the surrounding neighbourhood offers safety, style, and a high quality of life. If you're looking for a property with unmatched views, an extraordinary terrace, resort-style facilities, and the convenience of both parking and storage, this penthouse is everything you've been searching for – and more.



Características:

Características

Terraza
Elevar
Terraza

Vistas

Mar
Montaña
Vistas Panorámicas

Piscina

Comunal

Seguridad

Complejo cerrado

Orientación

Este
Sur
Sudeste
Noreste

Posición

Cerca del mar

Muebles

Opcional

Aparcamiento

Páking Subterráneo

Climatización

Aire acondicionado
Hogar

Estado

Excelente

Jardin

Comunal