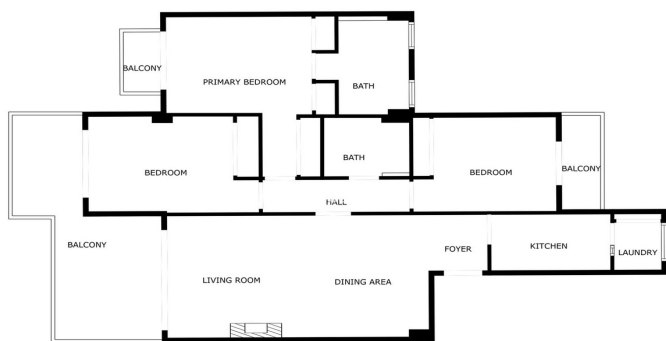




Ground Floor Apartment for sale in Alcazaba Garden, Puerto Banús, Marbella

720,000 €

Reference: R5144722 Bedrooms: 3 Bathrooms: 2 Plot Size: 146m² Build Size: 142m² Terrace: 14m²



SIZES ARE APPROXIMATE, ACTUAL MAY VARY.





Costa del Sol, Puerto Banús

Bright & Spacious Apartment in Alcazaba Garden – Just 200 metres from the Beach & a Short Walk to Puerto Banús

Welcome to your dream getaway on the Costa del Sol. This bright, spacious apartment in Alcazaba Garden has been designed for effortless beachside living, only 200 metres from the sea and a 12-minute stroll from the world-famous Puerto Banús. Enjoy sunny mornings and shaded afternoons on the large private terrace – ideal for dining, entertaining, or simply soaking up the Mediterranean lifestyle. With a partially covered area, you can retreat from the midday sun while still enjoying the outdoors. Inside, the home offers a generous open-plan living and dining room with direct terrace access, creating a seamless indoor-outdoor flow. The master bedroom features an en-suite bathroom and opens directly onto the terrace. One guest bedroom also enjoys terrace access, while the other benefits from its own private balcony – a perfect spot for morning coffee or evening wine. Convenience is at your doorstep: a hotel right in front of the apartment makes breakfast a luxury whenever you wish, and a taxi station outside offers easy transport – though with the marina, shops, and restaurants all within walking distance, you may never need it. Alcazaba Garden is known for its beautifully maintained grounds and excellent on-site amenities, making this apartment a low-maintenance, high-quality choice for beachside living. Whether as a holiday home, rental investment, or permanent residence, this property delivers the ultimate in relaxed, coastal luxury just minutes from the heart of Puerto Banús.



Features:

Features

Covered Terrace
Lift
Near Transport
Private Terrace
Storage Room
Ensuite Bathroom
Fitted Wardrobes
Utility Room
Restaurant On Site

Views

Garden
Pool

Pool

Communal

Garden

Communal

Category

Holiday Homes
Investment
Resale

Orientation

West
South West

Setting

Beachside
Close To Golf
Close To Port
Urbanisation
Close To Sea
Close To Shops
Close To Town
Close To Schools
Town
Marina
Close To Marina

Furniture

Fully Furnished

Security

Gated Complex
Electric Blinds
Safe

Climate Control

Air Conditioning
Fireplace
Central Heating

Condition

Good

Kitchen

Fully Fitted

Parking

Underground
Private