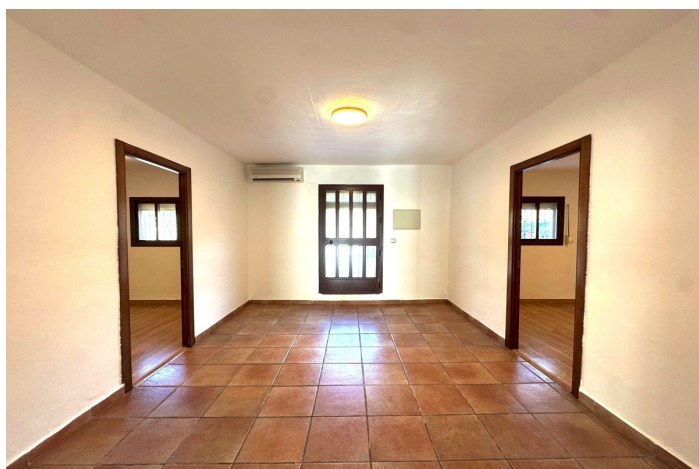




Townhouse for sale in San Enrique, San Roque

190,000 €

Reference: R5135368 Bedrooms: 2 Bathrooms: 1 Build Size: 109m² Terrace: 100m²





Costa de la Luz, San Enrique

Charming Single-Storey Cottage in Secadero, Manilva – Serene Rural Retreat with Proximity to Sotogrande's Luxe

Nestled in the tranquil hamlet of Secadero within Manilva's verdant embrace on the western Costa del Sol, this delightful single-storey cottage offers the perfect blend of rustic charm and modern convenience. Spanning 109 m² of built space, it features a generous 100 m² southeast-facing outdoor patio and integrated garage, creating an idyllic haven where only nature unfolds before and behind – flanked gently by neighbours on either side for a sense of secure community without intrusion. Bathed in all-day sunshine, the patio, garage, fully equipped kitchen, spacious living-dining area, and bathroom all orient southeast, while the remainder enjoys cooling northwest breezes, ensuring year-round comfort amid Andalusia's 300+ sunny days. Thoughtfully Appointed Interiors: Two cosy double bedrooms, ideal for restful nights or guest stays. One modern bathroom for effortless daily living. A bright, open-plan living-dining room, flowing seamlessly into a fully furnished kitchen boasting essential appliances: fridge, washing machine, gas hob, and efficient hot water heater – ready for immediate enjoyment. Step outside to your private outdoor oasis, perfect for al fresco dining, gardening, or simply savouring the Mediterranean breeze. Just 500 metres from Secadero's lively town heart, you'll find charming cafés with outdoor terraces, boutique shops, a local kindergarden, playground, school, paddle courts, and easy access to Manilva's celebrated hiking trails – including the enchanting Pinar del Tábano pine forest (known as Manilva's 'hidden gem' with sandy paths and Gibraltar views), the historic Martagina route through ancient cork oak groves and Bronze Age ruins at Los Castillejos, the serene Lago de Pajaritos reservoir trail, and the lush Alcorrín valley paths teeming with wildflowers and birdlife. These routes cater to all levels, from gentle strolls to invigorating hikes, immersing you in unspoiled natural beauty. A mere 15-minute drive whisks you to Sotogrande's prestigious enclave – Europe's premier polo and golf destination, home to world-class courses like Valderrama (host of the Ryder Cup), a glamorous marina, exclusive beach clubs, and fine dining – while Manilva's own golden sands, such as Playa de la Duquesa, lie just 10 minutes away for effortless coastal escapes. Gibraltar Airport is under 30 minutes, Málaga a scenic hour's journey. Whether as a peaceful family retreat, savvy investment in this rising expat haven, or nature lover's bolt-hole, this turnkey gem captures the authentic Andalusian lifestyle – tranquil yet tantalisingly close to luxury. Arrange your viewing today!



Features:

Features

Covered Terrace
Private Terrace
Storage Room
Double Glazing
Fitted Wardrobes
Access for people with reduced mobility

Views

Mountain
Country
Forest
Street

Furniture

Part Furnished
Optional

Orientation

South

Setting

Close To Town
Suburban
Village
Close To Forest

Kitchen

Fully Fitted

Climate Control

Air Conditioning

Condition

Recently Renovated

Parking

Garage
Private