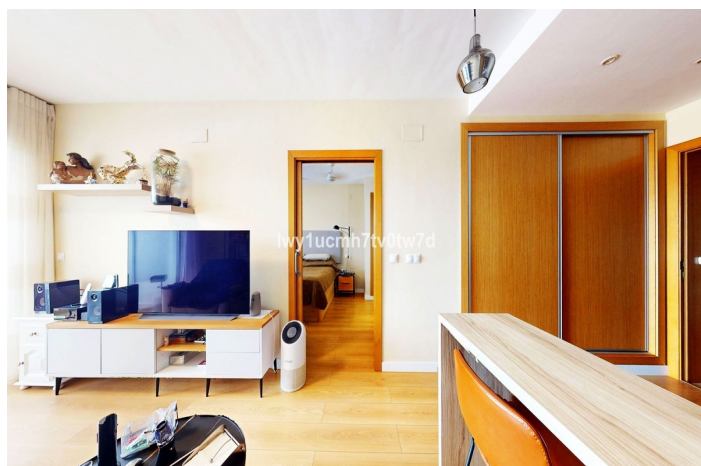




Lejlighed i midten etage til salg i Puerto de la Torre, Málaga

180.000 €

Reference: R5121880 Soveværelser: 1 Badeværelser: 1 Byg Størrelse: 70m² Terrasse: 10m²





Costa del Sol, Puerto de la Torre

ATTENTION!!! Flat in residential for people over 50 years old!!!! You can only buy over 50 and under 70 years! You buy the shares of the cooperative to live in the flat and enjoy all the services of the residential. Are you looking for a home where calm, comfort and an active and social lifestyle reign? This flat is much more than a home: it is an opportunity to be part of a unique, private environment designed to fully enjoy a new phase. Located in a private residential cohousing complex for the over 50s, this property is located in the sought-after area of Puerto de la Torre, north of Malaga city. An established residential area, known for its quiet, safe environment, surrounded by nature, ideal for those who wish to disconnect without leaving the city. The three basic conditions to live in the residential are: - To be between 50 and 70 years of age. - To be mentally and physically capable. - To cover the monthly maintenance costs, which are currently only €675. Translated with DeepL.com (free version) The connections are unbeatable: - Only 3 minutes from the A-7 motorway. - 15 minutes from Malaga International Airport - 20 minutes from the beaches of La Malagueta, Pedregalejo and El Palo. - 15 minutes from the historic centre of Malaga - Several bus lines connect easily to the centre and other key points. The flat, completely refurbished, offers 60 m² of functional and bright design. It is distributed in: - Cosy living-dining room with integrated open plan kitchen. - 1 bedroom with en suite bathroom, very comfortable and private. - Large private terrace with unobstructed sea and mountain views, perfect for relaxing in the evening. - South facing, perfect for all seasons. Also includes indoor parking space, storage room and access to a communal area.



Funktioner:

Funktioner

Dækket terrasse

Elevator

I nærheden af transport

Opbevaringsrum

Ensuite badeværelse

Dobbeltvindue

24 timers modtagelse

Monterede garderober

Wifi

Gymnastiksal

Spillelokale

Trægulv

Adgang for mennesker med reduceret

mobilitet

Synspunkter

Hav

Bjerg

Panoramisk

Pool

Kommunal

Have

Kommunal

Hjælpeprogrammer

Elektricitet

Drikkeligt vand

Gas

Solvandsopvarmning

Orientering

Syd

Indstilling

Urbanisering

Tæt på byen

Møbel

Fuldt møbleret

Sikkerhed

24 timers sikkerhed

Indgangstelefon

Kategori

Nødlidende

Klimakontrol

Aircondition

Tilstand

For nylig renoveret

Køkken

Fuldt monteret

Parkering

Åben