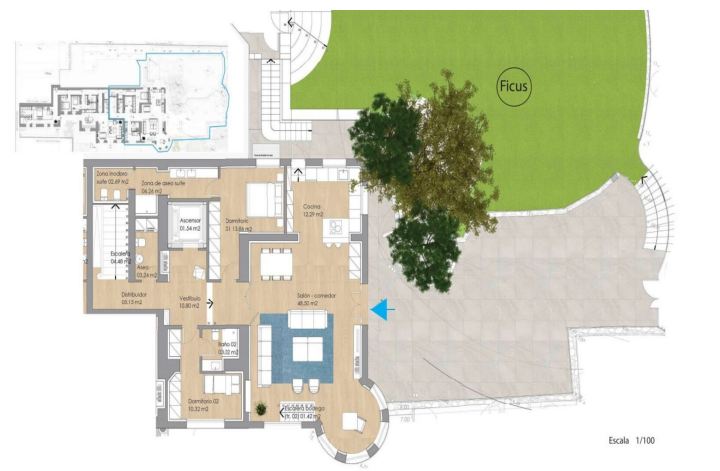


Duplex for sale in Málaga, Málaga

3,150,000 €

Reference: R4447678 Bedrooms: 4 Bathrooms: 5 Plot Size: 304m² Build Size: 314m² Terrace: 91m²



Costa del Sol, Málaga

The location:

Malaga Este, located between El Limonar and Malagueta. In one of the most exclusive and best connected areas of Malaga and just a step away from the beach.

The building:

Beautiful building with an eclectic style from the 1920s, a "urban Palace" with an indisputable heritage value and great architectural protection due to its high construction value, which reflects a golden age in the history of Malaga.

Comprised of: 4 exclusive, large-area, high-quality homes and 1 independent 1-bedroom home.

The houses have large private gardens and fantastic terraces. All this adorned with a spectacular gazebo with 5 Tuscan columns and glazed tiles, cornices with subtle classic moldings and balustrades on the terraces.

The promotion has a large garden area, community pool and parking spaces.

This apartment:

This is a 314 m2 duplex apartment, with a 304 m2 garden and a 91 m2 terrace. On the lower level of the duplex, you have 1 large living room with open kitchen (tot. of approx. 61 m2) with access to a large private garden of 304m2. On the same level, there are 2 bedrooms with their ensuite bathroom. On the second level, you have the master bedroom with ensuite bathroom and access to a 85m2 terrace and the 4th bedroom with its own ensuite bathroom.

The lower level of the duplex is the ground floor, which is a few steps higher than the street level.

Time frame: the flat is expected to be completed by H2 2025

Features:

Features

Lift
Near Transport
Private Terrace
Fitted Wardrobes
Near Church

Views

Sea
Garden

Pool

Communal

Garden

Communal

Private

Orientation

South

Setting

Beachside
Close To Port
Close To Sea
Close To Shops
Close To Town
Close To Schools
Town
Close To Marina

Furniture

Part Furnished

Parking

Private

Climate Control

Air Conditioning
Cold A/C
Hot A/C

Condition

Excellent
New Construction

Kitchen

Fully Fitted

Category

Luxury
Off Plan