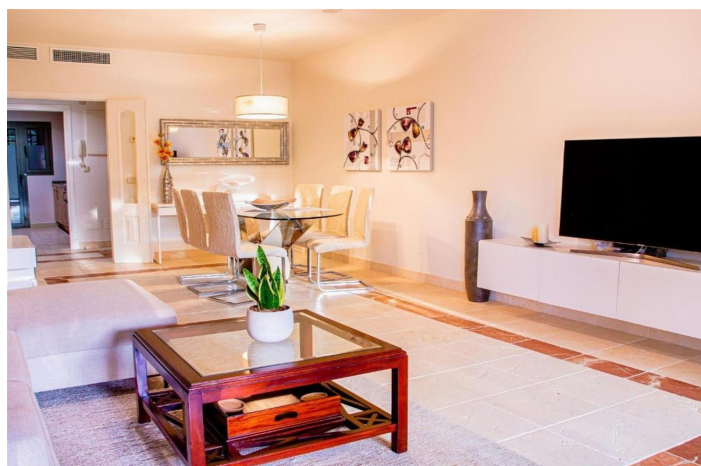




Ground Floor Apartment for sale in Benatalaya, Atalaya, Estepona

450,000 €

Reference: R5116465 Bedrooms: 2 Bathrooms: 2 Plot Size: 40m² Build Size: 140m² Terrace: 28m²





Costa del Sol, Atalaya

Elegant Ground-Floor Apartment with Large Terrace & Private Garden in Benatalaya, Atalaya Step into refined living with this elegant ground-floor apartment, perfectly situated in Benatalaya—one of the most prestigious gated communities in Atalaya. Offering both privacy and resort-style amenities, this residence combines comfort and convenience in an unbeatable Costa del Sol location. Just a short drive from the sandy beaches, the charming town of Benahavís, and the world-renowned Puerto Banús, the property is also within walking distance of everyday essentials: an international school, cafés, a large supermarket, and several top-class golf courses. Property Highlights: 2 spacious bedrooms and 2 modern bathrooms (master en-suite) Bright and airy living room with floor-to-ceiling windows and electric blinds Fully equipped kitchen with separate utility room (washer & dryer included) Expansive private terrace leading onto a private garden—ideal for relaxing or entertaining Secure underground parking and storage room with direct lift access Exclusive Community Features: 24-hour gated security with on-site guards Four outdoor swimming pools surrounded by landscaped gardens Indoor spa complex with heated pool, gym, and sauna Mediterranean-style setting with beautifully maintained pathways and green spaces This property is the perfect choice for discerning international buyers seeking a stylish holiday home, a solid investment, or a year-round residence offering both tranquillity and accessibility on the Costa del Sol.



Features:

Features

Covered Terrace
Lift
Private Terrace
Storage Room
Ensuite Bathroom
Marble Flooring
Double Glazing
Gym
Sauna

Views

Garden

Pool

Communal
Heated
Indoor

Garden

Communal
Private

Utilities

Electricity

Orientation

South West

Setting

Urbanisation
Close To Sea
Close To Shops
Close To Town
Close To Schools

Furniture

Optional

Security

Gated Complex
24 Hour Security
Entry Phone

Category

Luxury
Resale

Climate Control

Air Conditioning
Cold A/C
Hot A/C
U/F/H Bathrooms

Condition

Excellent

Kitchen

Fully Fitted

Parking

Underground