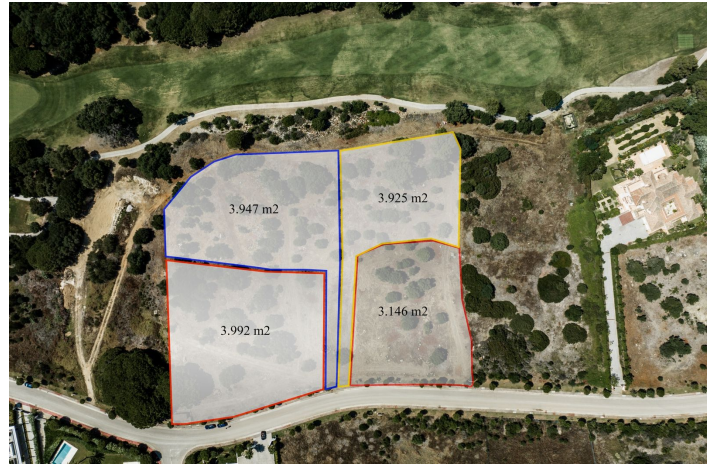




# Terreno Rustico en venta en Sotogrande, Sotogrande

2.917.583 €

Referencia: R5066236 Terreno: 7.939m<sup>2</sup>







## Costa de la Luz, Sotogrande

Set of 2 south-facing plots totalling 7,939 m<sup>2</sup> situated in La Reserva de Sotogrande, Cádiz, close to a well-known international college and just a few minutes drive to all the amenities that the Sotogrande marina has to offer. Possibility of acquiring one or two further adjoining plots. There are 4 in total, with the m<sup>2</sup> specified in one of the pictures. A great investment opportunity in an exclusive residential area of luxury homes just 10 minutes' drive to all amenities, only 1.15 hours to the Málaga international airport and 30 minutes' drive to the Gibraltar airport.



## Características:

### Características

Transporte cercano

### Posición

Junto a la playa

Cerca de las escuelas

### Orientación

Sur

### Jardin

Comunal

### Vistas

Vistas Urbanas

Calle

### Categoría

Lujo