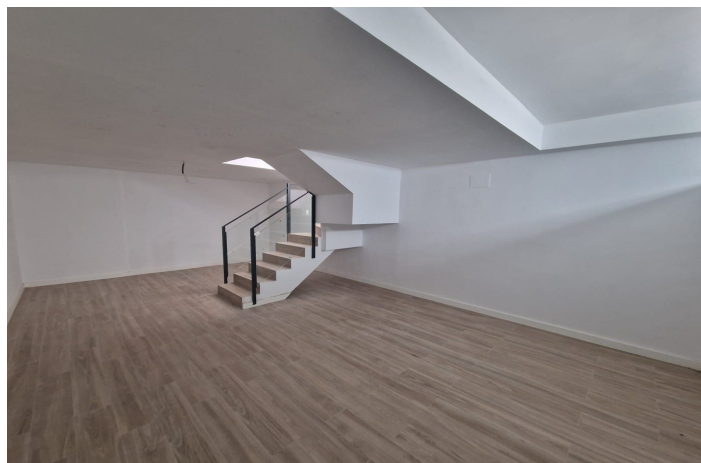
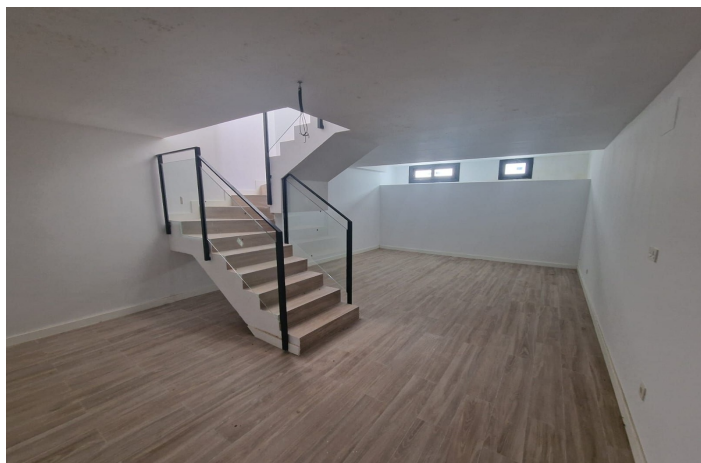




## Semi-Detached House for sale in Manilva, Manilva

385,000 - 490,000 €

Reference: R5110435 Bedrooms: 2 - 3 Bathrooms: 2 - 3 Plot Size: 138m<sup>2</sup> - 240m<sup>2</sup> Build Size: 128m<sup>2</sup> - 207m<sup>2</sup>





---

## Costa del Sol, Manilva

VILLA 1 207.45m<sup>2</sup> built on a 240m<sup>2</sup> plot. It has 3 bedrooms, 3 bathrooms, living room, kitchen, terrace, private garden, private garage for 2 vehicles, basement with natural light and excellent sea views. SEMI-DETACHED HOUSE 2 128.25 m<sup>2</sup> built on a 153m<sup>2</sup> plot. It has 2 bedrooms, 2 bathrooms, living room, kitchen, terrace, private garden, parking area within the plot, basement with natural light and excellent sea views. SEMI-DETACHED HOUSE 3 128.25m<sup>2</sup> built on a 138m<sup>2</sup> plot. It has 2 bedrooms, 2 bathrooms, living room, kitchen, terrace, private garden, parking area within the plot, basement with natural light and excellent sea views. SEMI-DETACHED HOUSE 5 128.25m<sup>2</sup> built on a 156m<sup>2</sup> plot. It has 2 bedrooms, 2 bathrooms, living room, kitchen, terrace, private garden, parking area within the plot, basement with natural light and excellent sea views.



## Features:

### Features

Private Terrace  
Ensuite Bathroom  
Double Glazing  
Fitted Wardrobes

### Setting

Close To Shops

### Garden

Private

### Climate Control

Pre Installed A/C  
Cold A/C

### Condition

New Construction

### Parking

Garage  
Private

### Views

Sea  
Mountain  
Garden

### Kitchen

Fully Fitted

### Category

New Development