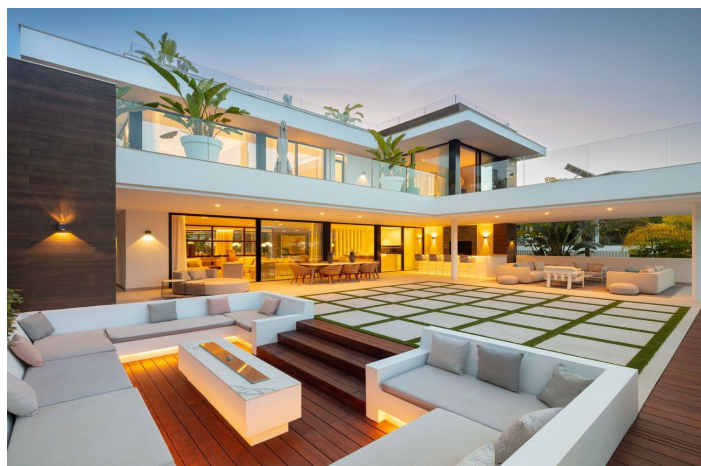
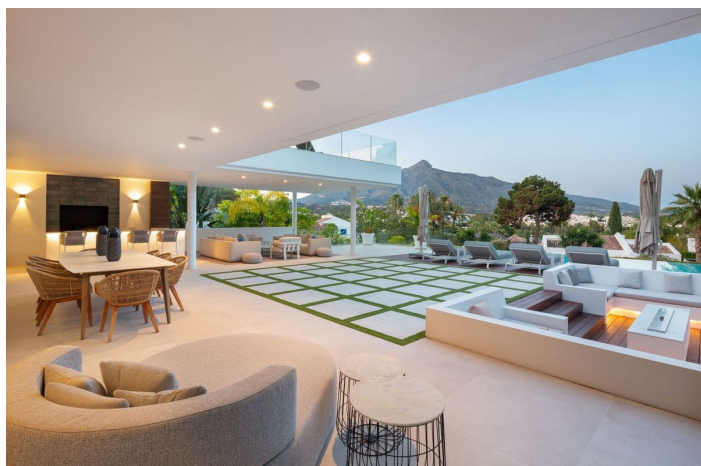
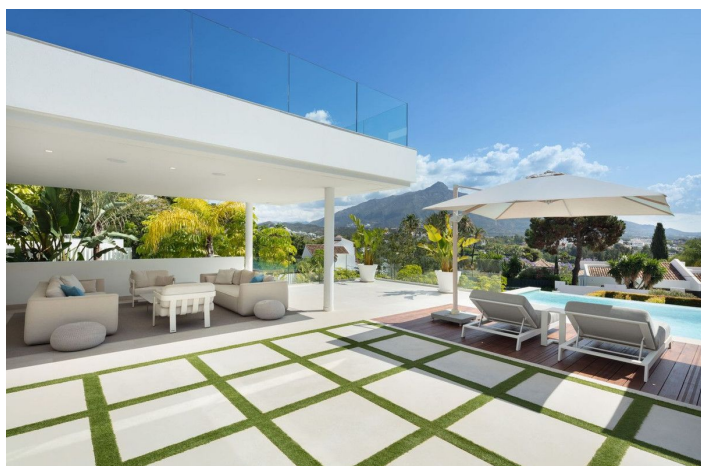




Detached Villa for sale in Nueva Andalucía, Marbella West

4,990,000 €

Reference: R5110468 Bedrooms: 5 Bathrooms: 6 Plot Size: 1,263m² Build Size: 556m² Terrace: 418m²





Costa del Sol, Nueva Andalucía

With its ideal east-facing orientation and breathtaking views of La Concha, this outstanding contemporary villa is flooded with natural light all day long. Situated in the prestigious Golf Valley of Nueva Andalucía, it offers an unparalleled blend of style, comfort, and prime location. The property's architecture is synonymous with luxury and elegance, crafted with high-end materials that beautifully decorate the property's exterior. Villa Camellia also boasts plenty of floor to ceiling windows and glass sliding doors, ideal for letting in an abundance of natural light. The generous exterior terraces allow for enjoying the outdoors and 320 days of sun Marbella offers its residents. The bespoke solarium equipped with a jacuzzi is perfect for indulging in the luxurious Marbella lifestyle. Villa Camellia's infinity pool that overlooks the La Concha mountain is perfect for dips during warm summers. The ample plot size and manicured gardens create an ideal atmosphere that provides privacy and tranquillity. The interiors have been curated to display fantastic furniture and finishings, creating an aesthetic yet practical living space. The open-plan living, dining and kitchen have direct terrace access, allowing to maximise indoor-outdoor living. Each bedroom has been elegantly designed to not only serve as a fashionable space but one that exudes comfort, acting as the perfect space to unwind and relax. With its prime location, fantastic interiors and ample terraces, Villa Camellia will impress all who visit. LET US MOVE YOU!



Features:

Features

Covered Terrace
Private Terrace
Satellite TV
Storage Room
Marble Flooring
Double Glazing
Fitted Wardrobes
Solarium
Barbeque

Views

Mountain
Pool

Pool

Private

Security

Entry Phone

Energy Rating

B

Orientation

East

Setting

Close To Golf
Close To Town
Close To Schools

Furniture

Fully Furnished

Parking

Private

CO2 Emission Rating

B

Climate Control

Fireplace
Central Heating
U/F Heating
U/F/H Bathrooms

Condition

Excellent

Garden

Private

Category

Luxury