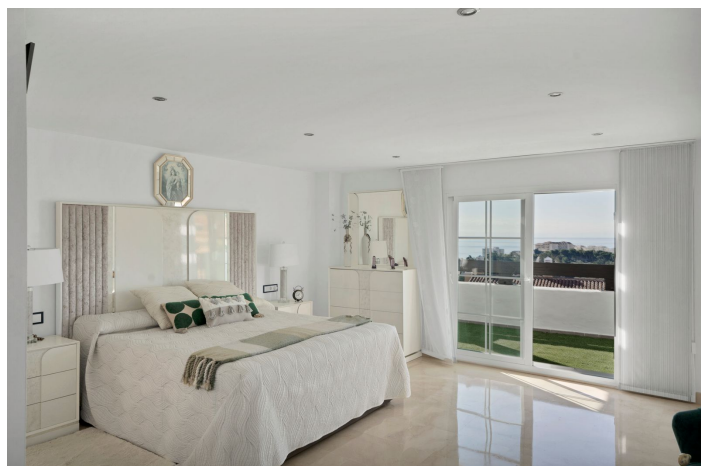




Penthouse for sale in Vista Hermosa, Torrequebrada, Benalmádena

1,190,000 €

Reference: R5105242 Bedrooms: 4 Bathrooms: 2 Plot Size: 640m² Build Size: 277m² Terrace: 413m²





Costa del Sol, Torrequebrada

Stunning Penthouse in Vista Hermosa, Benalmádena Costa Not visiting this penthouse means missing much more than a date with luxury— it's passing up a work of art and a once-in-a-lifetime experience. Some things in life are negotiable. Others are priceless. Like waking up each morning with Africa on the horizon, the sea at your feet, and the Sierra Nevada embracing the sky. This is not just another property. It's two penthouses seamlessly joined into one extraordinary home, occupying the entire top floor with private elevator access—and no neighbours. Silence, privacy, and space like you've never known. From its 413 m² of wraparound terraces with private pool and summer kitchen, to a master suite worthy of a magazine cover with jacuzzi and walk-in dressing room, every corner celebrates design, light, and freedom. Because true luxury isn't about square metres—it's about the way a place makes you feel. And here, you'll feel it from the moment you step inside. Property Highlights: 4 bright bedrooms with terrace or balcony access 2 full bathrooms + guest powder room 277 m² of interior living space 413 m² of private terraces with pool & outdoor kitchen Pre-installed sauna Underfloor heating throughout 4 private parking spaces Solar panels for energy efficiency High-end finishes: marble floors, climalit windows, premium appliances Vista Hermosa Community: Mediterranean gardens Communal pool Paddle courts Barbecue area Prime Location: Just 1.3 km from the beach 17 km to Málaga International Airport Surrounded by international schools, hospitals, supermarkets, golf courses, restaurants, and hiking trails Immediate access to the A-7 highway This is not just a listing. It's an invitation. Come see it—and you'll understand. Welcome to Vista Hermosa. Welcome to your next story.



Features:

Features

Lift
Marble Flooring
Solarium
Wood Flooring
Barbeque

Condition

Good

Kitchen

Fully Fitted

Energy Rating

E

Orientation

South East

Pool

Communal

Security

Alarm System

CO2 Emission Rating

E

Climate Control

Central Heating

Furniture

Fully Furnished

Parking

More Than One