



## Квартира на первом этаже для продажи в Puerto Banús, Марбелья Вест

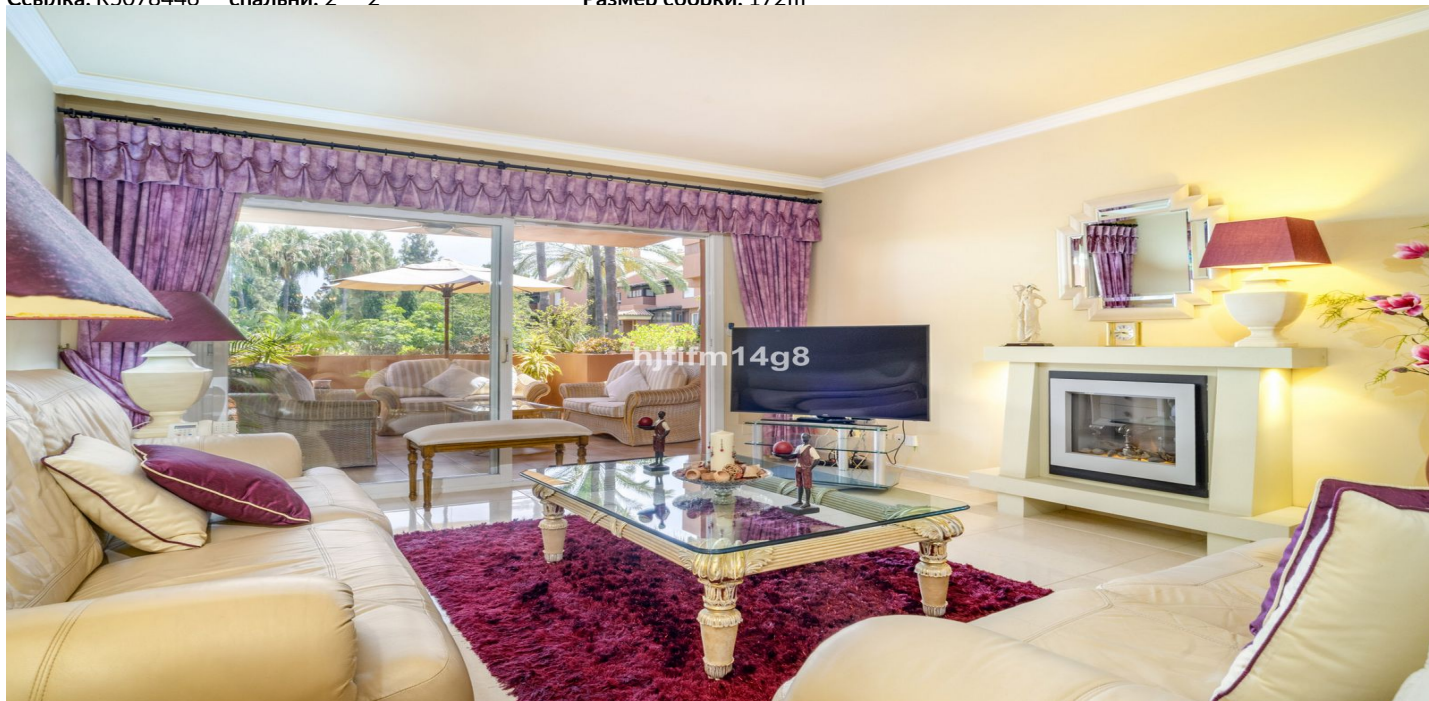
879 000 €

ванная комната:

Ссылка: R5078446

спальни: 2 2

Размер сборки: 172m<sup>2</sup>





## Коста дель Соль, Puerto Banús

Welcome to this beautifully situated ground floor apartment in the sought-after Embrujo Playa complex, ideally located between Puerto Banús and San Pedro de Alcántara, just a few minutes' walk from the beach. This prime location offers the best of both worlds – the glamour and energy of Puerto Banús to the east, and the charming, more traditional atmosphere of San Pedro to the west, both within easy walking distance. You can enjoy a leisurely stroll along the stunning beachfront promenade, easily accessed from the complex, with shops, restaurants, and beach clubs just moments away. Embrujo Playa is a prestigious, gated development renowned for its lush tropical gardens, 24-hour security, and exceptional communal areas, offering a peaceful and secure environment while still being close to all amenities. This particular unit enjoys one of the best positions within the complex. Facing south, it boasts a spacious, partly covered terrace that allows for both sun and shade throughout the day – perfect for relaxing or entertaining in any season. The communal pool area is beautifully positioned just in front of the terrace, offering a lovely open view while maintaining the ideal distance for peace and privacy. Inside, the apartment is bright and welcoming, with generous living spaces and a seamless indoor-outdoor flow. Included in the price are a private garage space and storage room, adding to the convenience and practicality of the property. Security is a top priority in Embrujo Playa, with 24-hour gated security and controlled access, ensuring complete peace of mind for residents whether as a permanent home or a holiday getaway. This is truly a rare opportunity to own a perfectly positioned home in one of the most desirable communities along Marbella's beachline, with close access to the beautiful beach promenade.



## Характеристики:

### Функции

Покрытая терраса  
Частная терраса  
Хранилище  
Мраморные полы

### Виды

Сад  
Бассейн  
Кухня  
Частично установлен

### Энергетический рейтинг

D

### Ориентация

Юг

### Параметр

Пляжный  
Рядом с морем  
Сад  
Коммунальный

### CO2 Рейтинг выбросов

D

### Климат -контроль

Камин

### Бассейн

Коммунальный

### Безопасность

Закрытый комплекс  
24 -часовая безопасность