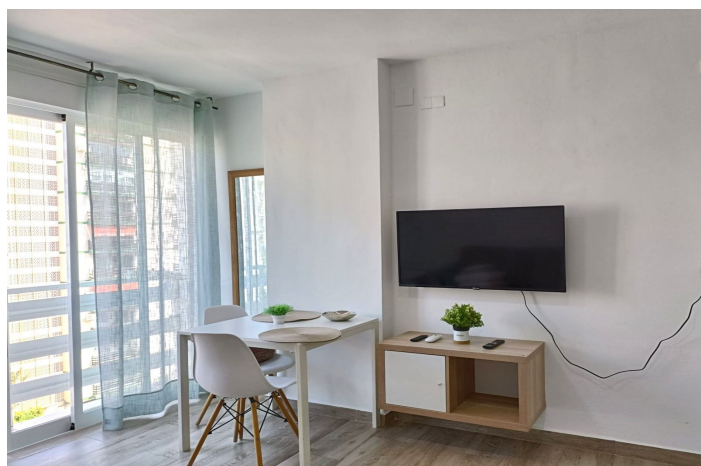




Studie på midterste etage til salg i Benalmadena Costa, Benalmádena

140.000 €

Reference: R5057470 Badeværelser: 1 Byg Størrelse: 22m²





Costa del Sol, Benalmadena Costa

INVESTMENT! YOU CAN USE IT FOR YOUR BUSINESS NOW. TOURIST LICENSE Opportunity in Benalmádena!
Renovated studio with sea views. Just 5 minutes walk from the beach Just 15 minutes from Malaga Airport 15 minutes from Fuengirola Renfe train station is located in the city center, which is a great advantage for tourists who don't have a car. Unbeatable Location: Located in the coveted Parque de la Paloma area, this studio offers the perfect combination of convenience and location. A 5-minute walk from the beach, surrounded by shops, restaurants, and public transportation, it is ideal for both living and investment. Outstanding Features: Completely Renovated: Modern and functional design that maximizes space. Bright: Large windows that allow natural light to enter. Building Amenities: Communal pool, gardens Guaranteed Profitability: High demand for vacation and long-term rentals. Has a tourist license. Ideal for: Investors looking for a property with high profitability. People who want a second home near the sea. Couples or singles who value urban living with access to nature. Summary Why choose this studio? Unbeatable location - close to the sea and in the heart of tourist activity Ideal option for vacation or vacation rental All the infrastructure at your fingertips: shops, restaurants, parks A beautiful promenade and a port with leisure options for the whole family, including boat trips Spectacular beaches with a wide range of water activities Near Puerta Marina Benalmadena, where the tourist season continues even during the winter months. Excellent connectivity: Just 15 minutes from Malaga Airport 15 minutes from Fuengirola Don't miss the opportunity to acquire a property in one of the best areas of the Costa del Sol! Contact us now and we'll arrange a viewing!



Funktioner:

Funktioner

Elevator
I nærheden af transport
Marmorgulve
Dobbeltvindue
Monterede garderober
Wifi
Bar

Fiberoptik

Synspunkter

Hav
Panoramisk
Have
Pool
Gade

Pool

Kommunal

Have

Kommunal

Kategori

Holiday Homes
Investerings
Beachfront
Billig

Orientering

Syd

Indstilling

Kommercielt område
Strandside
Tæt på havn
Urbanisering
Tæt på havet
Tæt på butikker
Tæt på byen
Tæt på skoler
Marina

Møbel

Fuldt møbleret
Valgfri

Parkering

Åben
Gade

Klimakontrol

Aircondition
Kold aircondition
Varm aircondition
U/f/h badeværelser

Tilstand

God
Fremragende

Køkken

Fuldt monteret
Kitchen-lounge

Hjælpeprogrammer

Elektricitet
Drikkeligt vand
Telefon