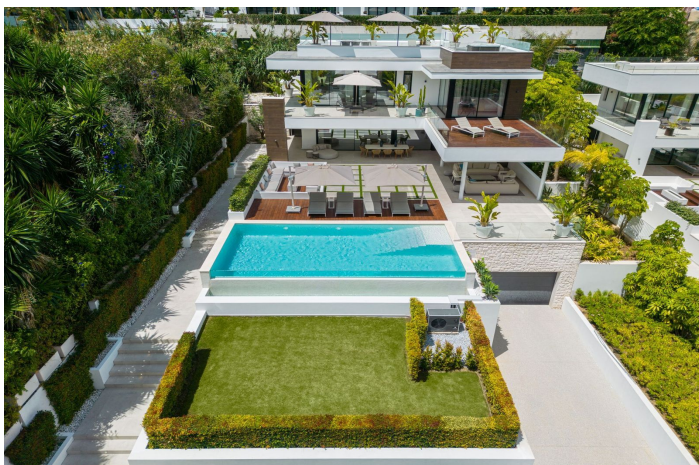
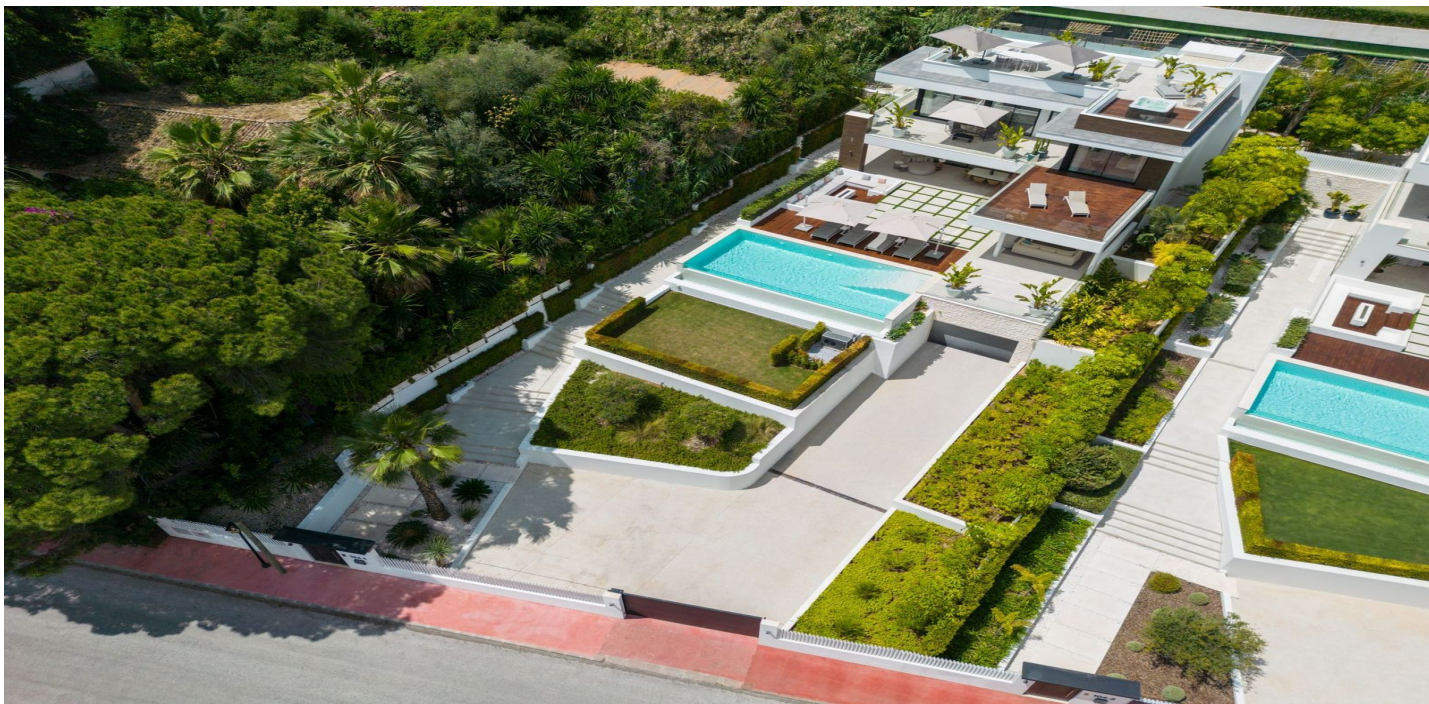




Detached Villa for sale in Nueva Andalucía, Marbella

4,990,000 €

Reference: R4679047 Bedrooms: 5 Bathrooms: 6 Plot Size: 1,263m² Build Size: 556m² Terrace: 418m²





Costa del Sol, Nueva Andalucía

Boasting picturesque views of La Concha and an ideal east-facing orientation, this exceptional contemporary villa is bathed in natural light throughout the day. Situated in the prestigious Golf Valley of Nueva Andalucía, it offers an unparalleled blend of style, comfort, and prime location. The property's architecture is synonymous with luxury and elegance, crafted with high-end materials that beautifully decorate the property's exterior. Villa Camellia also boasts plenty of floor to ceiling windows and glass sliding doors, ideal for letting in an abundance of natural light. The generous exterior terraces allow for enjoying the outdoors and 320 days of sun Marbella offers its residents. The bespoke solarium equipped with a jacuzzi is perfect for indulging in the luxurious Marbella lifestyle. Villa Camellia's infinity pool that overlooks the La Concha mountain is perfect for dips during warm summers. The ample plot size and manicured gardens create an ideal atmosphere that provides privacy and tranquillity. The interiors have been curated to display fantastic furniture and finishings, creating an aesthetic yet practical living space. The open-plan living, dining and kitchen have direct terrace access, allowing to maximise indoor-outdoor living. Each bedroom has been elegantly designed to not only serve as a fashionable space but one that exudes comfort, acting as the perfect space to unwind and relax. With its prime location, fantastic interiors and ample terraces, Villa Camellia will impress all who visit. LET US MOVE YOU!



Features:

Features

Covered Terrace
Private Terrace
Satellite TV
Storage Room
Ensuite Bathroom
Marble Flooring
Double Glazing
Fitted Wardrobes
Solarium
WiFi
Bar
Barbeque
Fiber Optic

Views

Mountain
Pool

Pool

Private
Garden
Private

Utilities

Electricity

CO2 Emission Rating

B

Orientation

East

Setting

Close To Golf
Close To Shops
Close To Town
Close To Schools

Furniture

Fully Furnished

Security

Entry Phone

Category

Investment
Luxury
Resale
Contemporary

Climate Control

Fireplace
Central Heating
U/F Heating
U/F/H Bathrooms

Condition

Excellent

Kitchen

Fully Fitted

Parking

Garage
Private
Covered
More Than One
Energy Rating
B