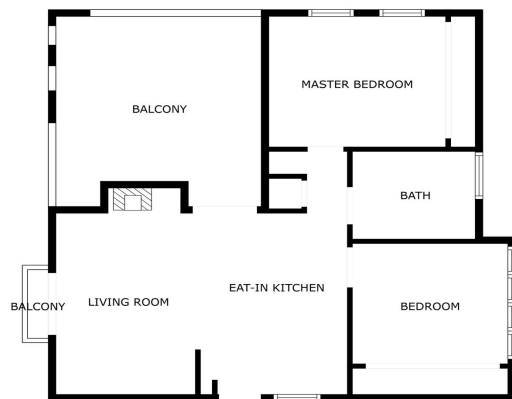




Penthouse for sale in Benalmadena Costa, Benalmádena

443,000 €

Reference: R5032642 Bedrooms: 2 Bathrooms: 1 Plot Size: 79m² Build Size: 79m²



SIZES ARE APPROXIMATE, ACTUAL MAY VARY.





Costa del Sol, Benalmadena Costa

Rare Opportunity – A Unique Home in a Legendary Community at a Prime Location! This stunning, fully renovated two-bedroom corner apartment offers the perfect combination of top location, high-quality finishes, and exceptional comfort. Ideally situated in the best part of the sought-after Pueblo Evita complex – on the top floor, in a peaceful corner position right on Avenida Las Palmeras – and just a few minutes' walk from the beach and all amenities. The undisputed highlight of the home is the large, private terrace, recently fitted with a state-of-the-art Lumon Panel Sandwich roofing system. It keeps out all rain while still allowing full sunlight in when desired – the panels slide away completely. The terrace also features a fireplace, connected to the chimney of the cozy indoor fireplace in the living area. The apartment has been renovated throughout with Nordic-quality craftsmanship, including: Stylish, fully renovated open-plan kitchen All appliances newly installed Cozy living room with fireplace Modern, functional bathroom Roof fully replaced by the current owner Interior and exterior freshly painted High-security front door installed The property is sold fully furnished, including high-quality furniture and recently purchased Unikulma beds – just bring your suitcase and move right in. The community features beautiful swimming pools, its own restaurants, and excellent accessibility. A private garage space is also included – a rare and valuable feature in this area! This is the perfect home for those who value quality, comfort, and a premium location.



Features:

Features

Near Transport
Private Terrace
Double Glazing
Fitted Wardrobes
Bar
Barbeque
Restaurant On Site

Setting

Beachside
Close To Golf
Close To Port
Close To Shops
Close To Town
Close To Schools

Climate Control

Air Conditioning
Fireplace

Pool

Communal
Private

Views

Mountain
Urban

Furniture

Fully Furnished