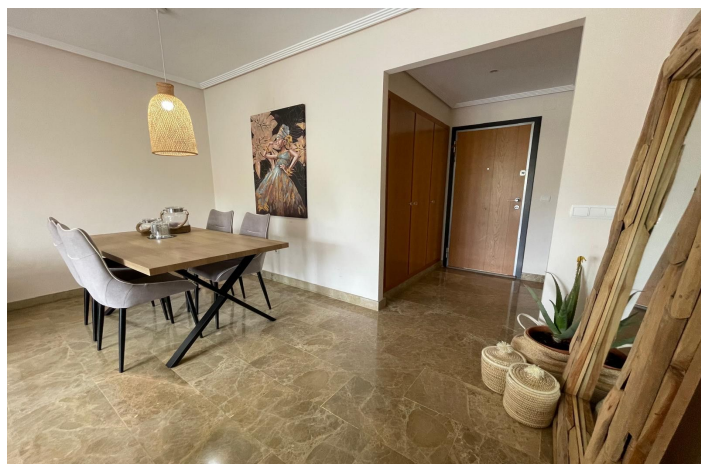




## Apartamento Planta Media en venta en Estepona, Estepona

360.000 €

Referencia: R5026492    Dormitorios: 2    Baños: 3    Construido: 125m<sup>2</sup>    Terraza: 40m<sup>2</sup>





---

## Costa del Sol, Estepona

This exclusive apartment is located in the prestigious La Resina Golf resort, located in Estepona East, Malaga. It is a modern and spacious apartment with a total built area of 125 m<sup>2</sup>, of which 85 m<sup>2</sup> interior and a spacious private terrace of 40 m<sup>2</sup>. The house has two comfortable bedrooms and two bathrooms, one en-suite. Thanks to its excellent location near amenities, restaurants and golf courses, this apartment is ideal for those looking for comfort and convenience in a quiet and green environment. The apartment is equipped with high quality amenities such as air conditioning, marble and stone floors, double glazing, shutters, and alarm system with armored door. There is also a spacious living and dining room and a separate kitchen with a laundry room on an external patio. The presence of a lift and a wheelchair accessible layout makes the apartment suitable for disabled persons. Optionally the apartment can be furnished. The outdoor areas are also impressive, with a large private terrace overlooking the mountains, the landscape and the beautiful communal gardens. There is both a covered and an open part of the terrace, which makes it possible to enjoy the outdoor life all year round. The common facilities include a large swimming pool, a children's pool, paddle grounds and a very well maintained communal garden with automatic irrigation system. Finally, the apartment has a private parking as well as a basement. The apartment is in excellent condition and is part of a closed and secure community, which guarantees extra peace and privacy. Thanks to its location within the golf resort and its proximity to various amenities, this apartment offers a unique combination of luxury, safety and comfort on the Costa del Sol.



## Características:

### Características

Terraza  
Elevar  
Terraza  
TV satelital  
Trastero  
Baño privado  
Piso de mármol  
Doble acristalamiento  
Armarios ajustados  
Wifi

Tenis de remo  
Sala de servicios  
Sótano  
Fibra óptica

### Vistas

Montaña  
País  
Jardín

### Muebles

Opcional

### Aparcamiento

Parking Privado

### Calificación energética

E

### Orientación

Sur

### Estado

Excelente

### Jardin

Comunal

### Servicios Públicos

Electricidad  
Agua potable  
CO2 Emission Rating  
D

### Climatización

Aire acondicionado

### Piscina

Comunal

### Seguridad

Complejo cerrado  
Seguridad de 24 horas  
Sistema de alarma  
Persianas

### Categoría

Golf