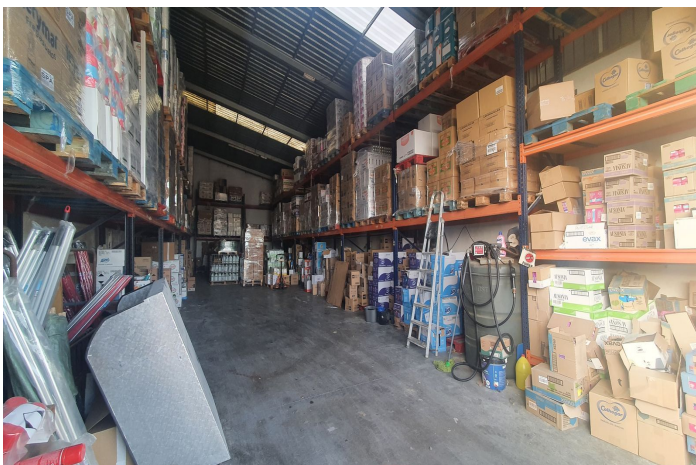
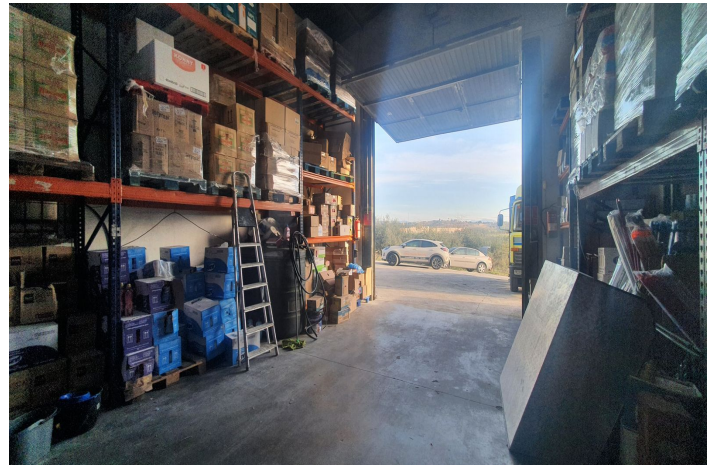


Warehouse for sale in Coín, Coín

295,000 €

Reference: R4631353 Bathrooms: 1 Plot Size: 3,000m² Build Size: 567m²



Valle del Guadalhorce, Coín

Rustic Plot with Industrial Warehouses in a 3,000m² plot with AFO Certification thus providing legal compliance. The entire property is securely fenced.

Key Features:

Two Industrial Warehouses: The property comprises two single-storey industrial warehouses with a 495m² total constructed area.

Warehouse 1 Amenities: Includes a bathroom and an office space of approximately 11m² on a mezzanine level, accessed via stairs.

Additional Storage Spaces: There are two warehouses and two covered sheds, totalling 145m² (computed at 50% covered area).

Water Storage: The property boasts three cisterns with capacities of 60,000 litres, 20,000 litres, and 10,000 litres, in addition to well water and town water sources.

Easy Access: The property is easily accessible, facilitating varied use of the installations.

Features:

Orientation

South

Condition

Good

Parking

Private

Open

More Than One

Views

Country

Furniture

Not Furnished

Utilities

Electricity

Drinkable Water

Setting

Close To Town

Country

Kitchen

Not Fitted

Category

Investment

Resale