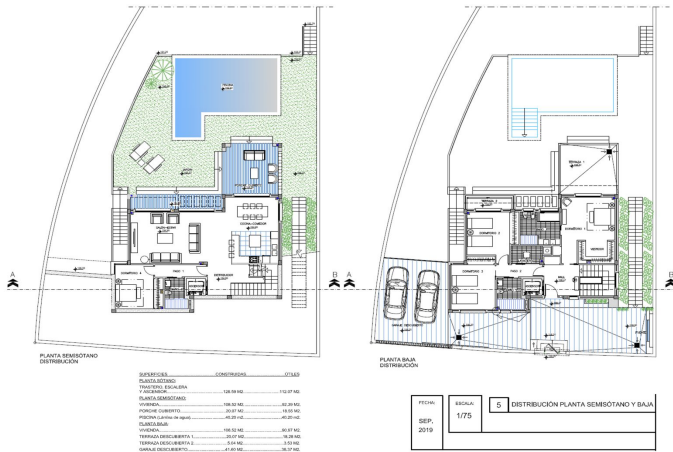


Residentiele Percelen te koop in Coín, Coín

95.000 €

Referentie: R3720593 Plotgrootte: 676m²



Valle del Guadalhorce, Coín

Residential plot with an informational preliminary project indicating that construction is possible on the plot, located in a popular urbanization in Coín.

This south-facing plot has magnificent views of the countryside and the Mijas mountains. The plot is slightly sloped, with green areas at the front and side.

The preliminary project is for a modern two-story villa of 218m² plus a basement of 129m², featuring 4 bedrooms, 3 bathrooms, and a pool. Please contact us for more information.

Kenmerken:

Zonorientatie

Zuiden

Uitzicht

Berg

Land

Stedelijk

Straat

Ligging

Verstedelijking

Dicht bij winkels

Dicht bij de stad

Parkeergelegenheid

Straat

Categorie

Investering

Off -plan

Wederverkoop

Met bouwvergunning