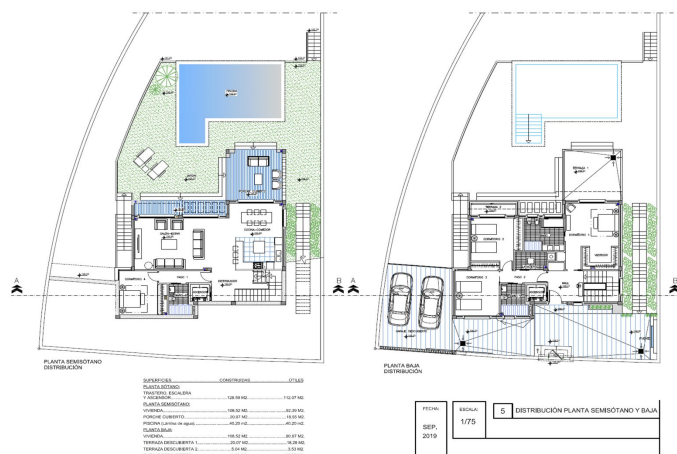


**115,000 €**

A wide-angle landscape photograph taken from an elevated position. On the left, a paved road with a brick-paved shoulder runs along the edge of the frame. The foreground is a dry, hilly slope covered with sparse, yellowish-brown grass and small, scrubby bushes. In the middle ground, a small town or village is visible, nestled in a valley. The town consists of numerous small buildings, mostly white, with some greenery interspersed. Behind the town, a large, rounded mountain rises prominently against a clear blue sky. The mountain has a greenish tint, suggesting vegetation. The overall scene is bright and sunny, with a clear horizon line.





---

## Valle del Guadalhorce, Coín

Residential plot with an informational preliminary project indicating that construction is possible on the plot, located in a popular urbanization in Coín. This south-facing plot has magnificent views of the countryside and the Mijas mountains. The plot is slightly sloped, with green areas at the front and side. The preliminary project is for a modern two-story villa of 218m<sup>2</sup> plus a basement of 129m<sup>2</sup>, featuring 4 bedrooms, 3 bathrooms, and a pool. Please contact us for more information.



## Features:

### Orientation

South

### Views

Mountain

Country

Urban

Street

### Setting

Urbanisation

Close To Shops

Close To Town

### Parking

Street

### Category

Investment

Off Plan

Resale

With Planning Permission