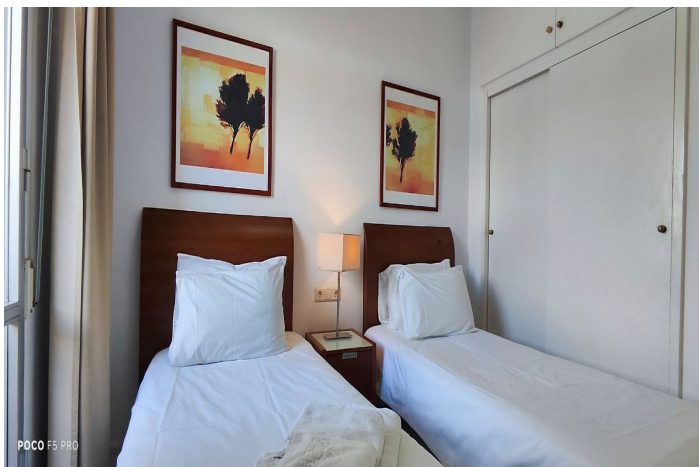




## Middle Floor Apartment for sale in Benalmadena Costa, Benalmádena

229,900 €

Reference: R5020321    Bedrooms: 1    Bathrooms: 1    Build Size: 45m<sup>2</sup>





---

## Costa del Sol, Benalmadena Costa

Unique opportunity in Benal Beach The best investment in Benalmádena with great profitability This attractive 45 m<sup>2</sup> apartment is offered in one of the most recognized and highly valued residential areas on the Costa del Sol: Benal Beach. This strategic location, just a five-minute walk from Bil Bil Beach and the Benalmádena seafront promenade, makes it an excellent option both as a holiday home and as a tourist rental. The apartment has one bedroom with a built-in wardrobe, a living room with a sofa bed, a fully furnished and equipped open-plan kitchen, a full bathroom with a shower, and a pleasant terrace with views of La Paloma Park. The Benal Beach development offers a unique setting with one of the most impressive communal pool complexes on the Costa del Sol. It features four interconnected pools with slides and a water mountain, one of which is heated, large green areas, year-round lifeguards, and access control via wristbands. The complex is fully gated, with communal parking, a 24-hour reception, and video surveillance throughout the building. Within the complex, there is also a supermarket, restaurant, cafeteria, fashion store, and private gym. In the immediate vicinity, there is a taxi and bus stop, a pharmacy, supermarkets, cafeterias, and restaurants. Directly opposite the complex are the famous La Paloma Park and the Selwo Marina theme park. In compliance with Decree 218/2005, of October 11, which approves the regulation on consumer information regarding the purchase and sale of homes in Andalusia, the client is informed that notary fees, registry fees, property transfer tax, financial intermediation fees, and other expenses inherent to the purchase and sale are not included in the price. Real estate agency fees are included.



## Features:

### Features

Covered Terrace  
Lift  
Near Transport  
Private Terrace  
Fitted Wardrobes  
WiFi  
Access for people with reduced mobility

### Views

Sea  
Mountain  
Pool  
Port

### Orientation

North East

### Climate Control

Air Conditioning

### Setting

Commercial Area  
Close To Golf  
Close To Port  
Urbanisation  
Close To Sea  
Close To Shops  
Close To Town  
Close To Schools  
Beachfront  
Port  
Marina  
Close To Marina  
Front Line Beach Complex

### Pool

Communal

### Furniture

Part Furnished

### Parking

Communal

### Kitchen

Fully Fitted

### Category

Reduced  
Holiday Homes  
Investment  
Bargain  
Beachfront  
Cheap  
Contemporary

### Garden

Communal