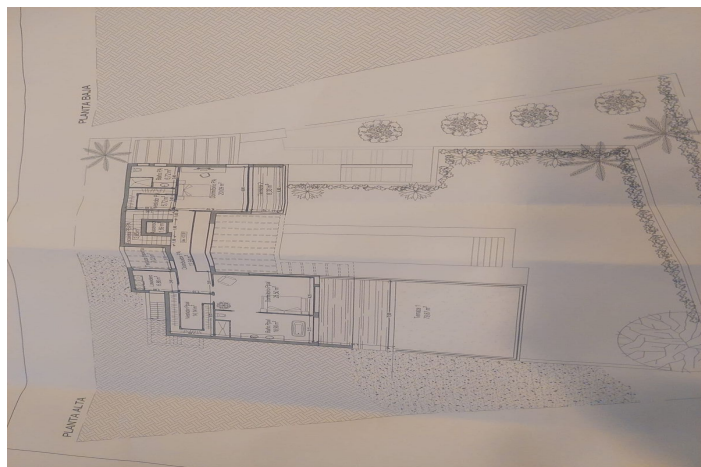
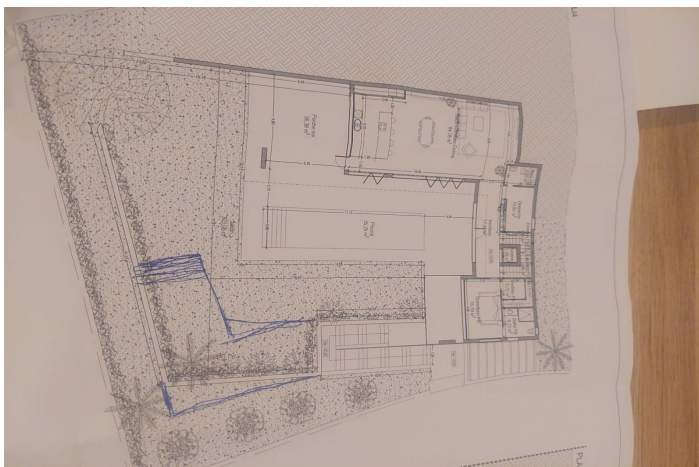




## Residentiele Percelen te koop in Coín, Coín

235.000 €

Referentie: R4312843 Plotgrootte: 1.200m<sup>2</sup>



PLANTA COCINA

CONSTRUCCION	AREA	CONSTRUCCION	AREA
Almuerzo	1,08 m <sup>2</sup>	Almuerzo	1,08 m <sup>2</sup>
Escalera PS-PA	3,85 m <sup>2</sup>	Escalera PS-PA	3,85 m <sup>2</sup>
Distribuidor PA	12,94 m <sup>2</sup>	Distribuidor PA	12,94 m <sup>2</sup>
Dormitorio PA	20,09 m <sup>2</sup>	Dormitorio PA	20,09 m <sup>2</sup>
Wc PA	6,72 m <sup>2</sup>	Wc PA	6,72 m <sup>2</sup>
Baño PA	25,50 m <sup>2</sup>	Baño PA	25,50 m <sup>2</sup>
Dormitorio PPAL	25,50 m <sup>2</sup>	Dormitorio PPAL	25,50 m <sup>2</sup>
Wc PPAL	14,14 m <sup>2</sup>	Wc PPAL	14,14 m <sup>2</sup>
Baño D. PPAL	19,90 m <sup>2</sup>	Baño D. PPAL	19,90 m <sup>2</sup>
Lavadero	6,96 m <sup>2</sup>	Lavadero	6,96 m <sup>2</sup>
T. terraza 1	78,87 m <sup>2</sup>	T. terraza 1	78,87 m <sup>2</sup>
T. terraza 2	8,33 m <sup>2</sup>	T. terraza 2	8,33 m <sup>2</sup>
T. terraza terraza	7,02 m <sup>2</sup>	T. terraza terraza	7,02 m <sup>2</sup>
<b>TOTAL</b>	<b>117,51 m<sup>2</sup></b>	<b>TOTAL</b>	<b>117,51 m<sup>2</sup></b>
<b>TOTAL VIVIENDA</b>	<b>471,55 m<sup>2</sup></b>	<b>TOTAL VIVIENDA</b>	<b>471,55 m<sup>2</sup></b>

PLANTA BAÑO





---

## Valle del Guadalhorce, Coín

Great investment!!!!!! Lovely double plot of 1200 m2 in Sierra Gorda , Coín . It is located in the best part of this urbanizable area of Sierra Gorda just few minutes drive from Coín village and ammenities, 20 minutes drive from Marbella coastline, malaga airport. This countryside has just started to devolop and is well demanded for its proximity to services ,seaside and at the same time for the peaceful countryside feeling. Each plot has 600 m2 and could be sold individually with a different price. Building permission is 0,25% plus terraces and basement. A pre project of a villa is available to have an idea of what can be built. Gread opportunity to acquire now at a good price.