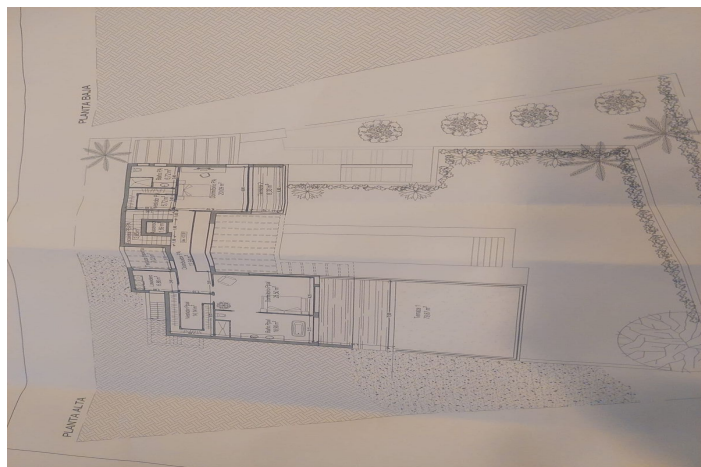
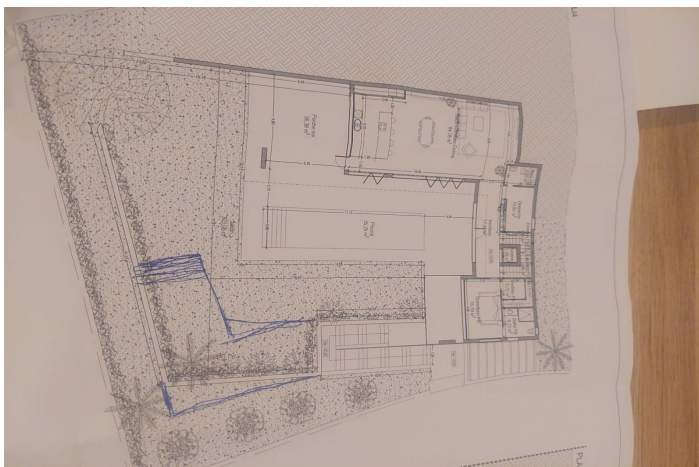




Residential Plot for sale in Coín, Coín

235,000 €

Reference: R4312843 Plot Size: 1,200m²



Planta Baja

Elemento	Superficie (m ²)
Almacén	1,08
Escalera PS-PA	3,85
Distribuidor PA	12,94
Dormitorio PA	20,09
W.C. PA	6,72
Baños PA	6,72
Dormitorio PPAL	25,50
W.C. PPAL	14,14
Baños PPAL	19,90
Lavadero	6,96
Terraza 1	78,87
Terraza 2	8,33
Terraza trasera	7,02
TOTAL	117,51
TOTAL VIVIENDA	471,55

Planta Alta

Elemento	Superficie (m ²)
Almacén	1,08
Escalera PS-PA	3,85
Distribuidor PA	12,94
Dormitorio PA	20,09
W.C. PA	6,72
Baños PA	6,72
Dormitorio PPAL	25,50
W.C. PPAL	14,14
Baños PPAL	19,90
Lavadero	6,96
Terraza 1	78,87
Terraza 2	8,33
Terraza trasera	7,02
TOTAL	117,51
TOTAL VIVIENDA	471,55





Valle del Guadalhorce, Coín

Great investment!!!!!! Lovely double plot of 1200 m2 in Sierra Gorda , Coín . It is located in the best part of this urbanizable area of Sierra Gorda just few minutes drive from Coín village and ammenities, 20 minutes drive from Marbella coastline, malaga airport. This countryside has just started to devolop and is well demanded for its proximity to services ,seaside and at the same time for the peaceful countryside feeling. Each plot has 600 m2 and could be sold individually with a different price. Building permission is 0,25% plus terraces and basement. A pre project of a villa is available to have an idea of what can be built. Gread opportunity to acquire now at a good price.