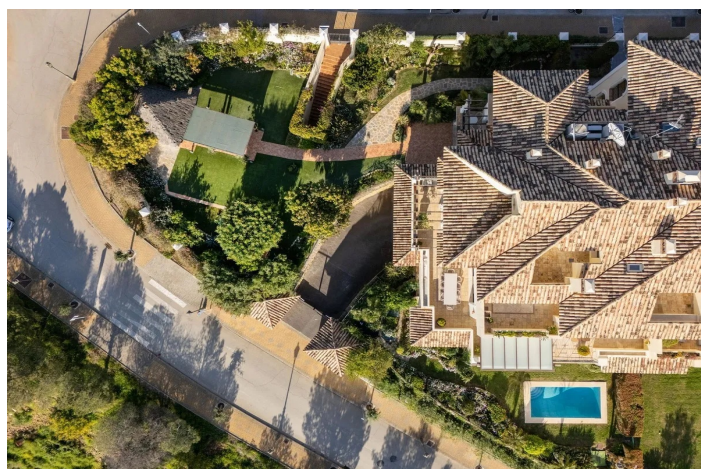




Ground Floor Apartment for sale in Aloha Park, Nueva Andalucía, Marbella

1,990,000 €

Reference: R5005591 Bedrooms: 3 Bathrooms: 3 Plot Size: 609m² Build Size: 220m² Terrace: 150m²





Costa del Sol, Nueva Andalucía

Exclusive Apartment with Private Garden in Aloha Park, Nueva Andalucía Welcome to Aloha Park, one of the most prestigious residential communities in Nueva Andalucía, Marbella. Nestled on a gentle hill and surrounded by lush, beautifully landscaped gardens, this elite development offers a serene and secure environment in the heart of the Golf Valley. Aloha Park provides its residents with exceptional on-site amenities, including: Two large outdoor swimming pools Heated indoor pool Sauna and gym 24-hour security and video surveillance Beautifully maintained park areas Prime Location: Perfectly situated just 10 minutes from the beaches and all amenities, and only 2 minutes from Aloha College. Surrounded by some of the best golf courses on the Costa del Sol, Aloha Park offers both tranquillity and convenience in one of Marbella's most sought-after areas. Property Highlights: This unique ground-floor apartment combines the advantages of both a penthouse and a villa. Its elevated position allows for breathtaking panoramic views of the sea, mountains, and coastline, while its private garden adds a rare touch of exclusivity. Interior area: 220 m² Terraces: 150 m² Private garden with separate BBQ area Private swimming pool Spacious living room and large kitchen Potential to configure up to 4 bedrooms Private parking space and storage room This remarkable residence offers a seamless blend of elegance, comfort, and outdoor living – an ideal home for those seeking privacy, space, and spectacular views within one of Marbella's most exclusive communities.



Features:

Features

Private Terrace

Storage Room

Barbeque

Views

Sea

Mountain

Panoramic

Pool

Private

Garden

Private

Orientation

South West

Setting

Close To Golf

Frontline Golf

Furniture

Fully Furnished

Security

Gated Complex

24 Hour Security

Climate Control

Air Conditioning

Condition

Excellent

Kitchen

Fully Fitted

Parking

Private