

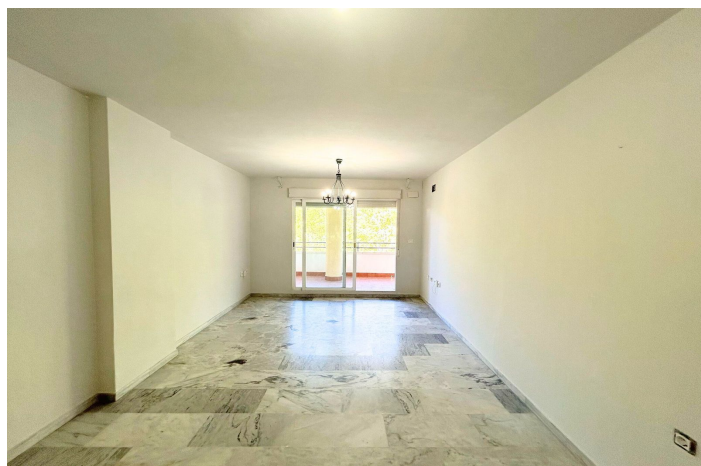
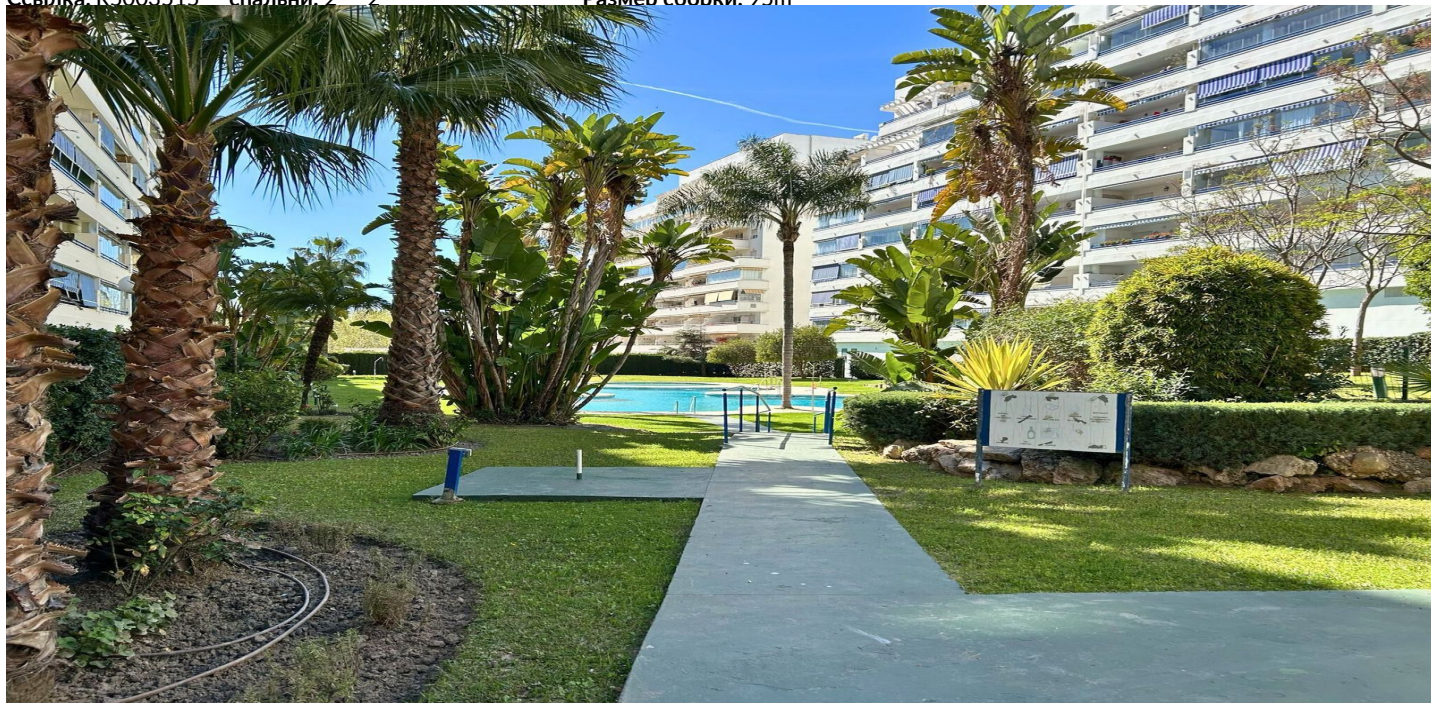


Квартира на среднем этаже для продажи в Марбелья, Marbella Centro

346 000 €

ванная комната:

Ссылка: R5003515 спальни: 2 2 Размер сборки: 95m²





Коста дель Соль, Марбелья

This charming 2-bedroom, 2-bathroom apartment is located on a comfortable middle floor of a modern urbanization, ideal for those seeking tranquility and convenience without losing proximity to all services. This apartment does not have a LPO but has a certificate of non-infringement from the city council. Main features: 2 bedrooms and 2 full bathrooms, perfect for a family or to enjoy with friends. Spacious and bright living-dining room, ideal for relaxing or entertaining guests. Fully equipped independent kitchen, with access to a laundry room. Private terrace, perfect for enjoying sunny afternoons thanks to its southeast orientation. Community pool and gardens, where you can relax and enjoy the outdoors. Optional parking for €35,000, offering the convenience of parking your car in the same building. Unbeatable location: Just 600 meters from Cable Beach, an ideal spot to enjoy the sea and sun. Walking distance to all amenities: restaurants, Mercadona supermarket, children's playground, and medical center. Bus stop at the door (lines 2 and 3), with direct connection to La Cañada Shopping and Marbella city center. Everything you need at your doorstep for a comfortable and stress-free life. For more information and visits, please do not hesitate to contact one of our sales agents. It's better to see in person.



Характеристики:

Функции

Поднимать
Рядом с транспортом
Двойное остекление
Приспособленные шкафы
Wi-Fi
Утилита
Доступ для людей с уменьшенной
мобильностью

Параметр

Урбанизация
Рядом с морем
Рядом с школами
Город
Порт

Мебель

Часть мебелирована

Безопасность

Закрытый комплекс
Входчик телефона

Ориентация

Юго -запад

Состояние

Хороший

Кухня

Частично установлен

Коммунальные услуги

Электричество
Питьевая вода
Газ

Виды

Городской
Улица

Бассейн

Коммунальный

Сад

Коммунальный