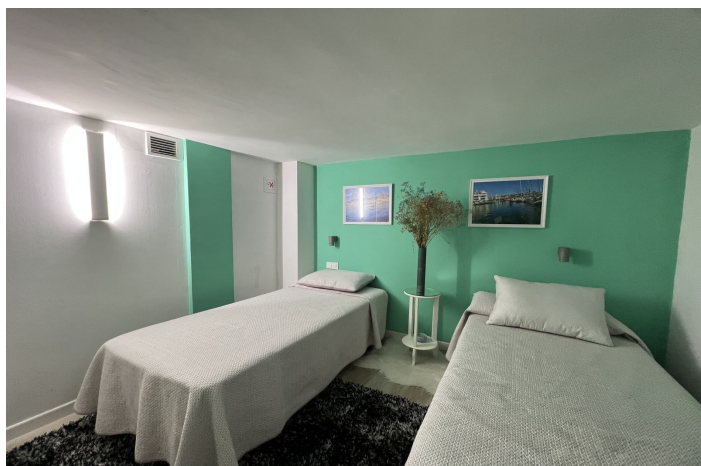




## Ground Floor Apartment for sale in Arroyo de la Miel, Benalmádena

258,500 €

Reference: R4994728    Bedrooms: 3    Bathrooms: 2    Build Size: 62m<sup>2</sup>





---

## Costa del Sol, Arroyo de la Miel

Located in one of the most sought-after areas of Benalmádena, this bright apartment with three bedrooms and two bathrooms with a shower is the perfect home for a family or perfect for investment. Just a few minutes' walk from the popular Parque de la Paloma and 900 meters from the beach, it offers an enviable location for those looking to enjoy a peaceful setting yet with all the amenities at hand. The layout: On the ground floor are two bedrooms, a bathroom, and the kitchen/living room. Upstairs is the third bedroom and another full bathroom. The property features a spacious living room, with a large window allowing natural light to flood the space throughout the day, creating a warm and welcoming atmosphere. The fully equipped open-plan kitchen is ideal for families who enjoy cooking together. The apartment is close to numerous shops, restaurants, and services, making everyday life easier. The nearby park is also perfect for children, who can enjoy its large green areas, playgrounds, and animals. With three spacious bedrooms, the home offers comfort and privacy for all family members or can be used as a great holiday investment. The modern and functional bathrooms have been designed with quality materials, while the air conditioning system ensures that the apartment remains comfortable throughout the year, both cold and hot. Without a doubt, a place that combines the tranquility of a natural setting with proximity to the beach and all the services necessary for a comfortable life. Don't miss the opportunity to visit it and make it your home!



## Features:

### Features

Near Transport  
Ensuite Bathroom  
Double Glazing  
Courtesy Bus  
Access for people with reduced mobility

### Views

Street

### Furniture

Fully Furnished

### Category

Holiday Homes  
Investment  
Bargain  
Beachfront  
Cheap

### Orientation

South East

### Setting

Beachside  
Close To Sea  
Close To Schools

### Kitchen

Fully Fitted

### Energy Rating

G

### Climate Control

Air Conditioning

### Condition

Excellent

### Parking

Street

### CO2 Emission Rating

E