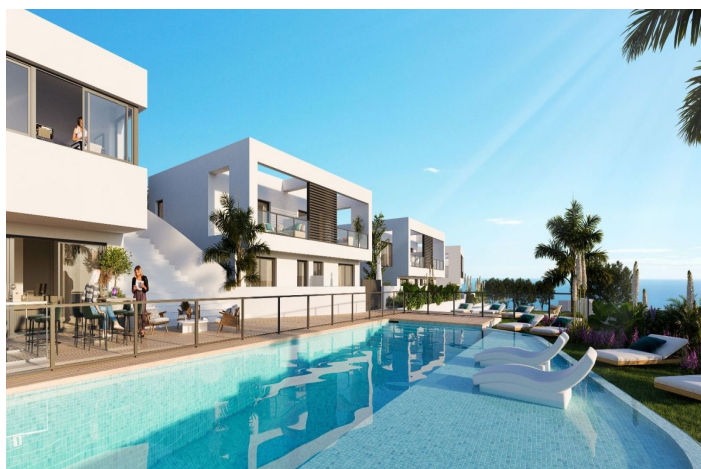




# Semi-Detached House for sale in Alya Mijas, Riviera del Sol, Mijas Costa

Reference: R4032826    Bedrooms: 3    Bathrooms: 2    Plot Size: 103m<sup>2</sup> - 152m<sup>2</sup>    Build Size: 119m<sup>2</sup> - 134m<sup>2</sup>    Terrace: 8m<sup>2</sup> - 12m<sup>2</sup>





---

## Costa del Sol, Riviera del Sol

Introducing a remarkable new off-plan development of contemporary semi-detached houses in Riviera del Sol, Mijas, with views over the mediterranean. The 3 and 4 bedroom homes each have a built area of 120m<sup>2</sup>-145m<sup>2</sup>, distributed over 2 floors, together with a garden and the option to add a private pool. Each home has been designed with quality and comfort in mind, and the outdoor space is ideal for enjoying the Costa del Sol's magnificent climate.. The communal areas include a saline chlorination pool, gymnasium, co-working area, and landscaped garden areas. The build specifications, amenities and location make these semi-detached houses excellent value for money. The houses are superbly located on a hillside overlooking the mediterranean. All facilities are in close proximity, including good access to the highway, beautiful beaches, international schools, fine dining, golf courses and the lively cosmopolitan towns of La Cala de Mijas and Calahonda. It is a private and peaceful place to live, close to all the fun that the Costa del Sol has to offer, but not in the middle of it. Riviera del Sol is ideally located midway between the popular resort towns of Fuengirola and Marbella. Fuengirola is just a 10 minute drive away and enjoys a wide range of facilities, great beaches, the Mijas Aqua Park, multi-screen cinemas and the Parque Miramar Shopping Centre. The upmarket resort of Marbella and the popular La Cañada shopping centre is a short 15 minute drive away in the opposite direction.



## Features:

### Features

Covered Terrace  
Ensuite Bathroom  
Fitted Wardrobes  
Gym

### Views

Beach

### Parking

Garage  
Private  
Open  
More Than One

### Orientation

South  
West

### Setting

Close To Golf  
Close To Sea  
Close To Shops  
Close To Schools

### Category

Off Plan  
Contemporary  
New Development

### Climate Control

Cold A/C  
Hot A/C

### Garden

Communal  
Private  
Landscaped