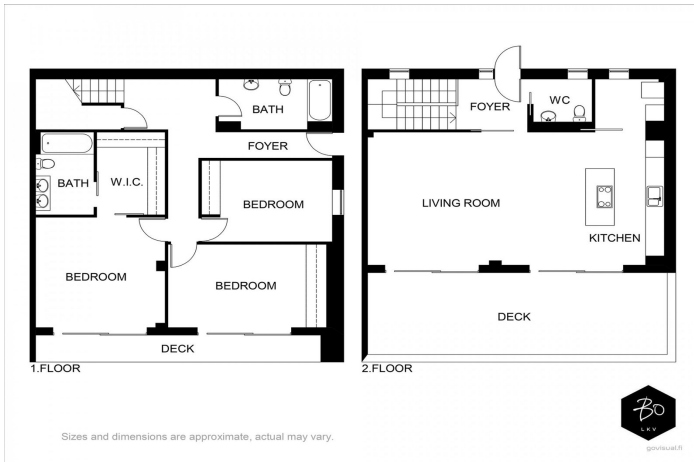




## Townhouse for sale in El Chaparral, Mijas

850,000 €

Reference: R4988206 Bedrooms: 3 Bathrooms: 3 Plot Size: 72m<sup>2</sup> Build Size: 175m<sup>2</sup> Terrace: 28m<sup>2</sup>





---

## Costa del Sol, El Chaparral

El Chaparral needs little introduction to those familiar with the Costa del Sol. Situated between La Cala de Mijas and Fuengirola, this enchanting, intimate complex is ideally positioned near one of the region's most cherished pastimes: golf. Surrounded by lush greenery at the heart of the Costa del Sol, it offers a perfect fusion of nature, fine dining, and entertainment, within an area celebrated for its vibrant bars, restaurants, and leisure facilities. Just five minutes away, El Chaparral Beach beckons as an idyllic retreat for relaxation with loved ones, offering a diverse range of water sports and beach clubs set against picturesque coves. It's the ideal spot to bask in the Mediterranean climate all year long. This home has been designed to balance style with comfort. The open-plan communal areas and generous interiors are crafted to flood the space with natural light, providing an incredibly inviting living experience. The expansive living room features large picture windows and high-quality porcelain floor tiles, creating an effortlessly bright and airy environment that maximizes daylight throughout the day. The spacious terrace offers panoramic sea views—an ideal setting to unwind and witness breathtaking sunsets. The kitchen flows seamlessly into the living area, contributing to the open, fresh ambiance that's perfect for relaxed, everyday living. Top-tier finishes, including quartz countertops, integrated appliances, and ambient LED lighting, further elevate the space, adding sophistication and warmth. In the bathrooms, large-format porcelain tiles exude elegance, underscoring the attention to detail and commitment to quality design. This is a rare opportunity to own a brand-new townhouse in one of the most sought-after locations on the Costa del Sol.



## Features:

### Features

Covered Terrace  
Near Transport  
Private Terrace  
Ensuite Bathroom  
Double Glazing  
Fitted Wardrobes  
WiFi  
Domotics  
Fiber Optic

### Views

Sea  
Garden  
Street

### Pool

Communal

### Parking

Covered

### CO2 Emission Rating

B

### Orientation

South

### Setting

Close To Golf  
Close To Port  
Close To Sea  
Close To Shops  
Close To Town  
Close To Schools

### Garden

Private

### Utilities

Telephone

### Climate Control

Air Conditioning  
U/F/H Bathrooms

### Condition

New Construction

### Security

Gated Complex  
Electric Blinds  
Entry Phone

### Energy Rating

B