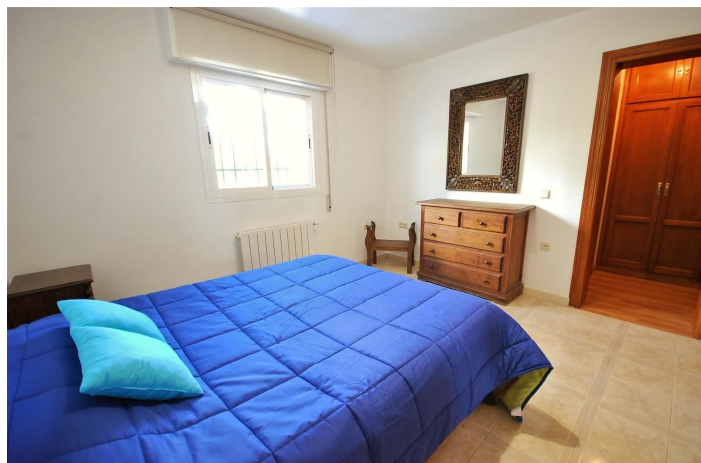




Semi-Detached House for sale in Benahavís, Benahavís

400,000 €

Reference: R4201366 Bedrooms: 2 Bathrooms: 3 Plot Size: 181m² Build Size: 115m²





Costa del Sol, Benahavís

Charming 2 bedroom semi-detached house in the breathtaking village of Benahavís, surrounded by mountains and set just above the Guadalmina River. The house is built on a 180m² plot giving it plenty of outside space including private parking and wrap around terrace. On the groundfloor we have a fully equipped, bright kitchen overlooking the south facing terrace, guest w.c. & a spacious living-dining room seperated by a few steps making the dining room feel more like an independent area. The living room exits onto a north facing terrace. Upstairs is the master suite with dressing room and another bedroom with dressing room and family bathroom. The upstairs terrace was converted into a possible third bedroom although it's entrance is through the second bedroom therefore becoming an ideal dressing room. The property is within walking distance to all amenities including local shops, bars & restaurants, sports facilities, children's parks and more. This property has huge potential and the options to renovate and extend are endless! Semi-Detached House, Benahavís, Costa del Sol. 2 Bedrooms, 2.5 Bathrooms, Built 115 m², Garden/Plot 181 m². Setting : Country, Village, Mountain Pueblo, Close To Golf, Close To Shops, Close To Schools, Close To Forest. Orientation : North, South. Condition : Good. Climate Control : Central Heating. Views : Mountain, Urban. Features : Fitted Wardrobes, Private Terrace, Ensuite Bathroom, Double Glazing. Furniture : Optional. Kitchen : Fully Fitted. Parking : Private. Utilities : Electricity, Drinkable Water, Telephone. Category : Resale.



Features:

Features

Private Terrace
Ensuite Bathroom
Double Glazing
Fitted Wardrobes

Views

Mountain
Urban

Furniture

Optional

Utilities

Electricity
Drinkable Water
Telephone

Orientation

North
South

Setting

Close To Golf
Close To Shops
Close To Schools
Country
Village
Mountain Pueblo
Close To Forest

Kitchen

Fully Fitted

Category

Resale

Climate Control

Central Heating

Condition

Renovation Required

Parking

Private