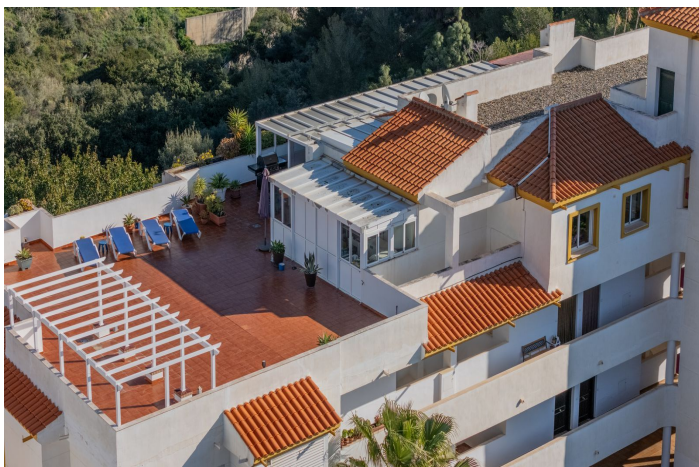




Penthouse for sale in Residencial Benalmarina, Benalmádena

695,000 €

Reference: R4955506 Bedrooms: 3 Bathrooms: 2 Build Size: 126m² Terrace: 182m²





Costa del Sol, Benalmadena Pueblo

Stunning penthouse for sale in Benalmarina with exceptional terraces and panoramic views near Benalmádena Pueblo. This penthouse in Residencial Benalmarina offers a rare combination of spaciousness, privacy, and breath taking views of both the Mediterranean sea and the beautiful Andalusian mountains. With 90 m² of indoor living space and a massive 219 m² of terrace area, this home is designed to enjoy life under the open sky. The property features three generous bedrooms, two modern bathrooms, a newer Designa kitchen and a large, bright aluminium sunroom with double glazed windows, a total 24 m². The vast terrace wraps around the apartment, offering endless possibilities for relaxation, sunbathing, and outdoor dining with stunning views. - A morning terrace 6 m² - A sheltered terrace 23 m² - A large terrace with 360 degree sun view, total 154 m². The property offers two private parking spaces underground and a storage room, located next to the elevator that takes you directly to the apartment. Adjacent to the terrace you find a laundry room 12 m², which includes new washing machine/dryer and workshop with many cupboards and table space. The property is located in an urbanization with two communal pools and a padel court, and is just a short walk to the charming Benalmádena Pueblo, where you'll find cosy cafés, restaurants, and shops. This is a unique opportunity to own a penthouse with exceptional outdoor space, perfect for those who want to combine comfortable living with the best of Costa del Sol's climate and lifestyle. Contact us today for more information or to schedule a private viewing.



Features:

Features

Lift
Private Terrace
Storage Room
Ensuite Bathroom
Solarium
Paddle Tennis

Setting

Urbanisation
Close To Schools

Furniture

Not Furnished

Parking

Underground

Climate Control

Air Conditioning

Condition

Excellent

Garden

Communal

Category

Resale
Contemporary

Views

Sea
Mountain
Panoramic

Pool

Communal

Security

Gated Complex