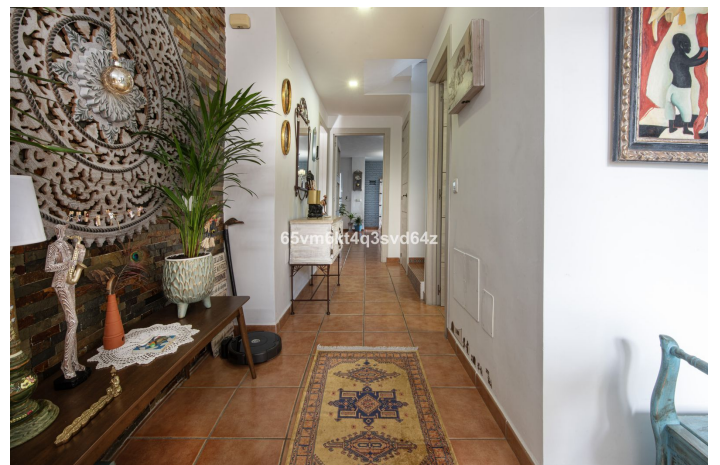
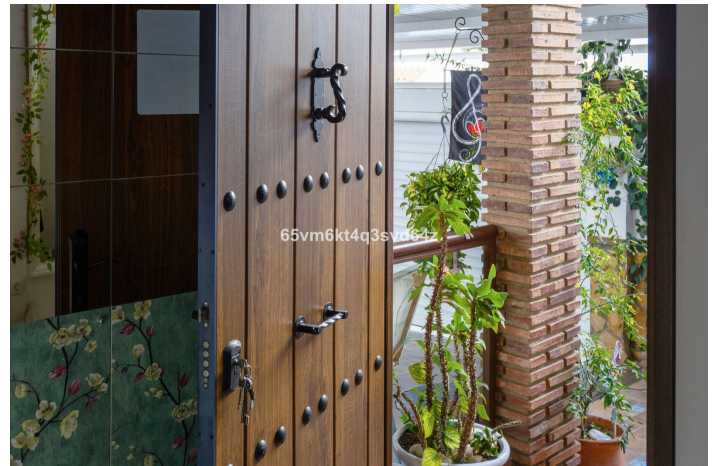




Pareada en venta en Benalmádena, Benalmádena

625.000 €

Referencia: R4989112 Dormitorios: 3 Baños: 3 Construido: 178m² Terraza: 36m²





Costa del Sol, Benalmádena

Discover the home of your dreams in this spectacular and unique semi-detached house with stunning sea and mountain views! With a built area of 214 m², this house is ideal to enjoy all year round. Distributed over three floors, it offers a cosy and functional space for the whole family. On the ground floor, you will find an entrance hall leading to a large fully equipped and furnished kitchen, a bright living-dining room and a guest toilet. From the enclosed porch, you access a terrace perfect for enjoying outdoor barbecues and a communal garden.

On the first floor, the master bedroom suite offers access to an enclosed terrace, perfect for relaxing in privacy. There are also two additional bedrooms and a full bathroom. The top floor houses a 36 m² solarium with beautiful sea and mountain views, ideal for enjoying the sunsets. There is also a 7 m² storage room for your convenience.

This house, built in 2002, is in excellent condition and has solar and photovoltaic panels for efficient energy consumption. The hot/cold pump heating ensures your comfort all year round. With east-west orientation, it makes the most of the natural light. It also includes a covered garage for two cars. Don't miss the opportunity to live in this privileged enclave with all the comforts you've always wanted, come and visit it and fall in love!

In compliance with the Decree of the Junta de Andalucía 2182005 of the 11th of October, we inform the client that the notary, registry, ITP and other expenses inherent to the purchase are not included in the sale price. The real estate agency fees are included.



Características:

Orientación

Este

Oeste

Estado

Excelente

Aparcamiento

More Than One

Climatización

Aire acondicionado

Piscina

Comunal

Servicios Públicos

Paneles solares fotovoltaicos

Calefacción de agua solar

Vistas

Mar

Montaña

Jardin

Comunal