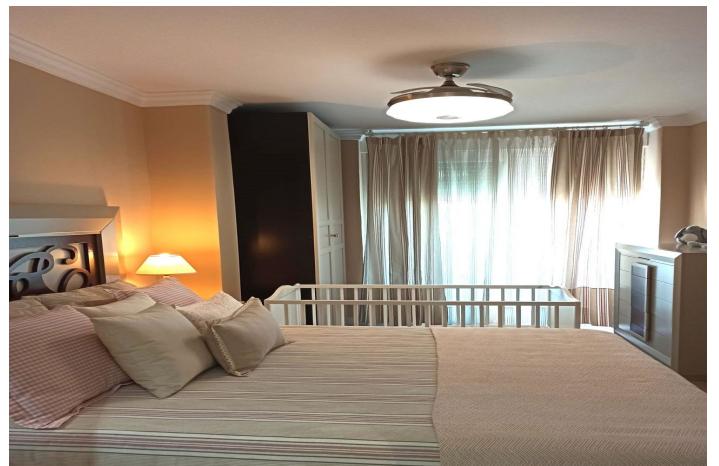
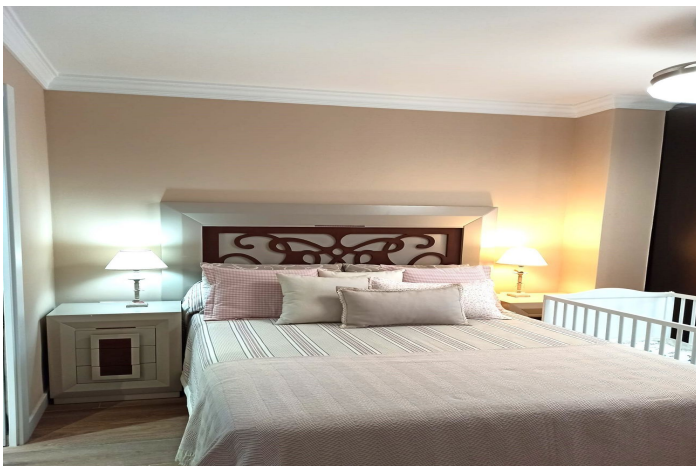


# Middle Floor Apartment for sale in Benalmadena Costa, Benalmádena

450,000 €

Reference: R4955347 Bedrooms: 2 Bathrooms: 2 Build Size: 150m<sup>2</sup> Terrace: 15m<sup>2</sup>





## Costa del Sol, Benalmadena Costa

Newly renovated apartment, with extraordinary qualities and high quality finishes. It has two large bedrooms with built-in wardrobes and exterior. One of them with an en-suite bathroom. The living room is quite cozy and has direct access to a terrace with artificial grass, where you can spend summer afternoons or contemplate the sea. The recently renovated kitchen with furniture on both sides will provide us with the ease of cooking in a relaxed manner. Another bathroom completes the property. The house stands out for its privileged location in Puerto Marina, from which only by opening the windows we can breathe the breeze of the Mediterranean Sea. We inform you that our agency fees are already included in the sale price, so you do not have to pay any type of expense for management or real estate advice. And that in compliance with the Decree of the Junta de Andalucía 218-2005 of October 11, it is reported that the notary, registry, ITP and other expenses inherent to the sale are not included in the price. The information provided is indicative, is not binding and has no contractual value. The offer is subject to errors, changes in price, availability and/or withdrawal from the market without prior notice. This information may have been modified but not yet incorporated. We suggest you contact the company to obtain the latest information and/or confirm the information provided here. We are experienced and honest. Professionals in Benalmádena.

## Features:

### Features

Lift  
Near Transport  
Private Terrace  
Marble Flooring  
Fitted Wardrobes  
WiFi  
Courtesy Bus  
Access for people with reduced mobility

### Views

Sea  
Port  
Urban  
Street

### Pool

Communal

### Security

Entry Phone

### Category

Resale  
Contemporary

### Orientation

South

### Setting

Commercial Area  
Close To Port  
Urbanisation  
Close To Sea  
Close To Shops  
Close To Town  
Close To Schools  
Beachfront  
Port  
Close To Marina

### Furniture

Not Furnished

### Parking

Street

### Climate Control

Air Conditioning

### Condition

Recently Refurbished

### Kitchen

Fully Fitted

### Utilities

Electricity