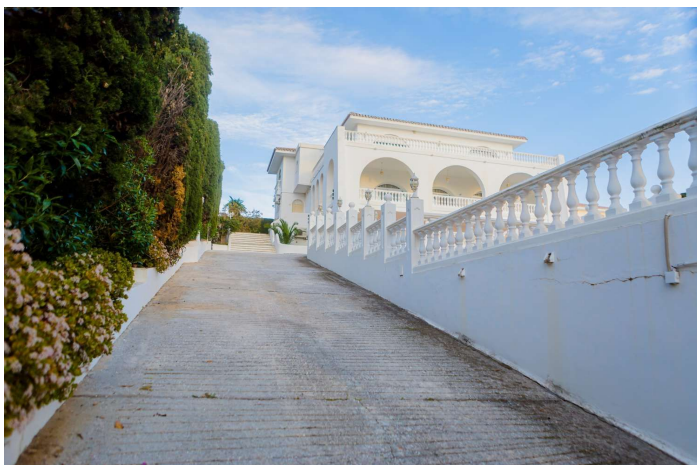
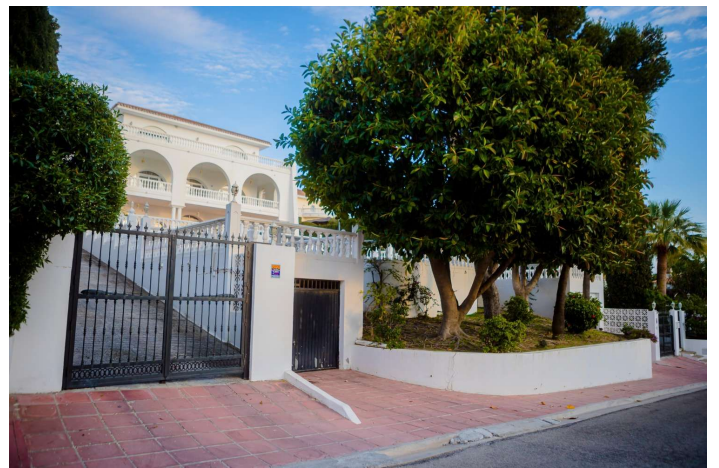
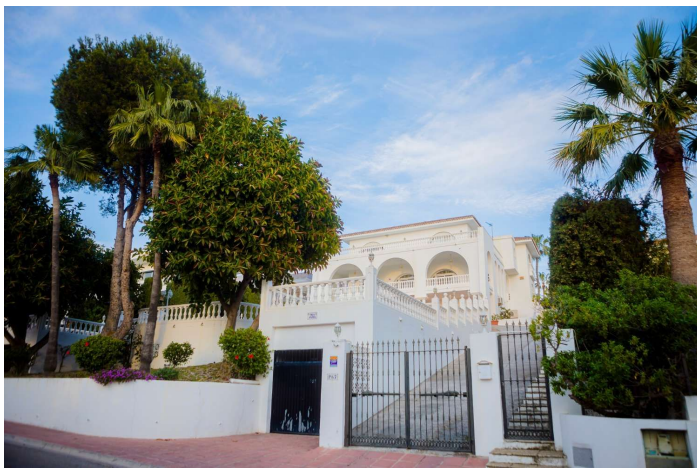


Villa - Chalet en venta en Benalmádena, Benalmádena

1.695.000 €

Referencia: R4952458 Dormitorios: 6 Baños: 5 Terreno: 1.779m² Construido: 785m² Terraza: 154m²



Costa del Sol, Benalmádena

Discover the jewel of Benalmadena Costa! This stunning detached villa, located in an exclusive residential area, offers you a luxurious and comfortable lifestyle. With 785 m² of living space, it has 6 bedrooms and 5 bathrooms, ideal for large families or for entertaining guests. The independent kitchen is fully furnished and equipped, ready for you to prepare your favourite dishes.

Enjoy spectacular sea views from its spacious terraces, perfect for relaxing at sunset. The property includes two parking spaces and a large plot of 1,779 m² with a private pool, where you can enjoy the Mediterranean climate. The split-level living and dining room create a cosy and elegant atmosphere.

In addition, the semi-basement floor houses an independent apartment with its own kitchen, ideal for long visits or as a rental space. The villa also has an office, gym and ample storage space. On the ground floor you will find a hall, guest room, living-dining room, kitchen and toilet, while the upper floor has 4 bedrooms with en-suite bathrooms.

With renovation potential that will allow you to personalize every corner to your liking, this villa is located just 10 minutes walk from the beach and close to supermarkets, health center, restaurants and Malaga airport. Don't miss the opportunity to live in this coastal paradise. Contact us for more information!

Características:

Características

Terraza
Transporte cercano
Terraza
Trastero
Baño privado
Piso de mármol
Armarios ajustados
Autobús de cortesía

Vistas

Mar
Montaña
Vistas Panorámicas
Piscina

Golf

Playa

Piscina

Piscina Privada

Aparcamiento

Cochera
Párking Privado
Párking Cubierto
More Than One

Calificación energética

D

Orientación

Oeste

Posición

Cerca del golf
Cerca del mar
Cerca de las tiendas
Cerca de la ciudad
Cerca de las escuelas
Cerca de Marina

Cocina

Cocina Equipada

Servicios Públicos

Electricidad
Agua potable

CO2 Emission Rating

D

Climatización

Aire acondicionado

Estado

Buen estado de conservación

Jardin

Jardín Privado
Mantenimiento fácil

Categoría

Casas de vacaciones
Inversión
Frente a la playa
Golf
Lujo
Reventa