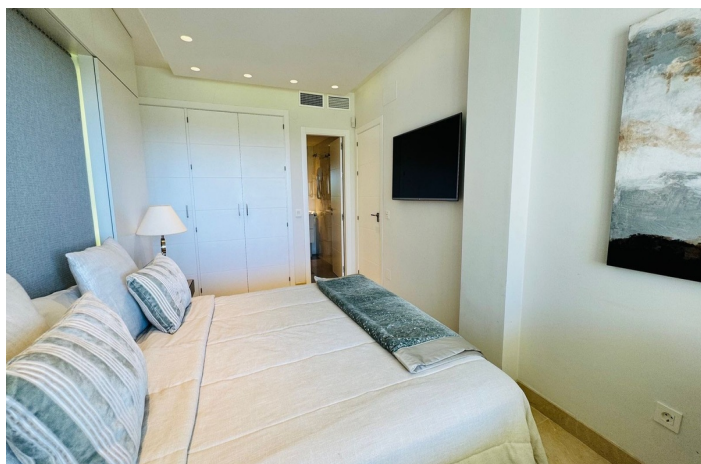




## Ground Floor Apartment for sale in Club del Agua, Hacienda Playa, Elviria, Marbella East

890,000 €

Reference: R4867849 Bedrooms: 2 Bathrooms: 2 Plot Size: 30m<sup>2</sup> Build Size: 75m<sup>2</sup> Terrace: 20m<sup>2</sup>





---

## Costa del Sol, Elviria

Frontline beach apartment for sale in Club del Agua, Hacienda Playa, Elviria, east of Marbella. Rare opportunity to acquire a frontline beach property in the very exclusive area of Elviria located 15mins drive from Marbella. This 2 bedroom, 2 bathroom, ground floor apartment is totally renovated in a modern style and is sold fully furnished. The contemporary open plan kitchen opens to the living room which leads to a covered terrace, equipped with glass curtains which can be opened when needed. The property is very bright and is part of a small very exclusive complex of only 14 apartments, where all have stunning sea views. It is equipped with double glazing windows and electric blinds, air-conditioning (hot and cold). The apartment has a private garden included in the title deeds and a private covered parking space. The community garden of 2400m has direct access to the beach. The size of the plot is exceptional for only 14 apartments. The beautifully designed pool, and gardens are all very well maintained. You are allowed to rent short term in this complex, making the property a great little earner, perfect for an investor. The residence is located walking distance to famous beach clubs such as the Marriott, Nikki Beach and the 5 star Don Carlos Hotel. Within a few minutes walk there are several commercial centres in the Elviria area. Elviria is an upmarket area, very popular with golf lovers for its renowned Santa Maria Golf course, surrounded by green wooded protected forests. For those who dream of lounging in their own garden with the sea only a few meters away, this is the dream! Don't miss this rare find ! Contact us to arrange your visit !!



## Features:

### Features

Covered Terrace  
Lift  
Near Transport  
Private Terrace  
Ensuite Bathroom  
Marble Flooring  
Double Glazing  
Fitted Wardrobes

Access for people with reduced mobility

### Views

Sea  
Garden  
Pool  
Beach

### Pool

Communal

### Garden

Communal  
Private

### Utilities

Electricity

### Orientation

South

### Setting

Beachside  
Close To Golf  
Close To Sea  
Close To Shops  
Close To Schools  
Beachfront  
Front Line Beach Complex

### Furniture

Fully Furnished

### Security

Gated Complex  
Alarm System  
Electric Blinds  
Entry Phone

### Category

Beachfront  
Luxury  
Resale  
Contemporary

### Climate Control

Air Conditioning  
Cold A/C  
Hot A/C

### Condition

Excellent  
Recently Renovated

### Kitchen

Fully Fitted

### Parking

Private  
Covered