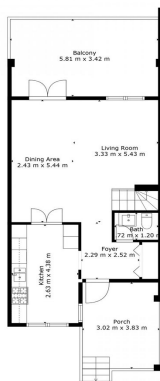


Townhouse for sale in Estepona, Estepona

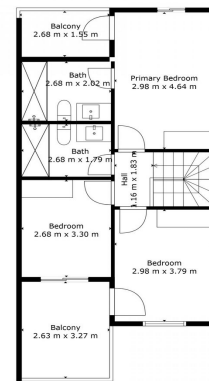
475,000 €

Reference: R4922425 Bedrooms: 3 Bathrooms: 3 Build Size: 151m²



TOTAL: 103 m²
 FLOOR 1: 51 m², FLOOR 2: 52 m²
 EXCLUDED AREAS: BALCONY: 23 m², PORCH: 12 m²

Floor Plan Created By Colucci App. Measurements Deemed Highly Reliable But Not Guaranteed.



TOTAL: 103 m²
 FLOOR 1: 51 m², FLOOR 2: 52 m²
 EXCLUDED AREAS: BALCONY: 23 m², PORCH: 12 m²

Floor Plan Created By Colucci App. Measurements Deemed Highly Reliable But Not Guaranteed.



Costa del Sol, Estepona

Discover the charm of this bright townhouse apartment nestled in a serene and well-maintained community in Monte Biarritz, a highly sought-after location. This delightful home offers three spacious bedrooms on the upper floor, while the inviting living spaces are conveniently situated downstairs. Over the past decade, the apartment has undergone regular renovations and, having been used sparingly, remains in excellent condition.

For your comfort and convenience, the property features two well-appointed bathrooms upstairs and a guest toilet on the lower level. Enjoy the luxury of two balconies and two terraces, allowing you to bask in both the morning and evening sun. The apartment comes fully furnished with timeless Scandinavian furniture.

Step out onto the main terrace and be captivated by the community's beautiful garden, which boasts a lush landscape, a lovely pool area, and breathtaking views of the mountains, with occasional glimpses of the sea. You'll also have the convenience of one parking space within the gates of your front yard. The community is known for its meticulous upkeep, and this year, the community is set to enhance its appeal further with the painting of the facades.

The convenient location is a short walk away from several restaurants, a grocery store not to mention the beach.

Embrace the opportunity to make this excellent townhouse apartment your new home, contact us for flexible viewings!

Features:

Features

Covered Terrace
Near Transport
Private Terrace
Storage Room
Ensuite Bathroom
Marble Flooring
Bar

Views

Mountain
Garden
Pool

Pool

Communal
Garden
Communal

Orientation

East

Setting

Close To Sea
Close To Shops
Close To Town
Close To Schools

Furniture

Fully Furnished

Climate Control

U/F/H Bathrooms

Condition

Good

Kitchen

Fully Fitted